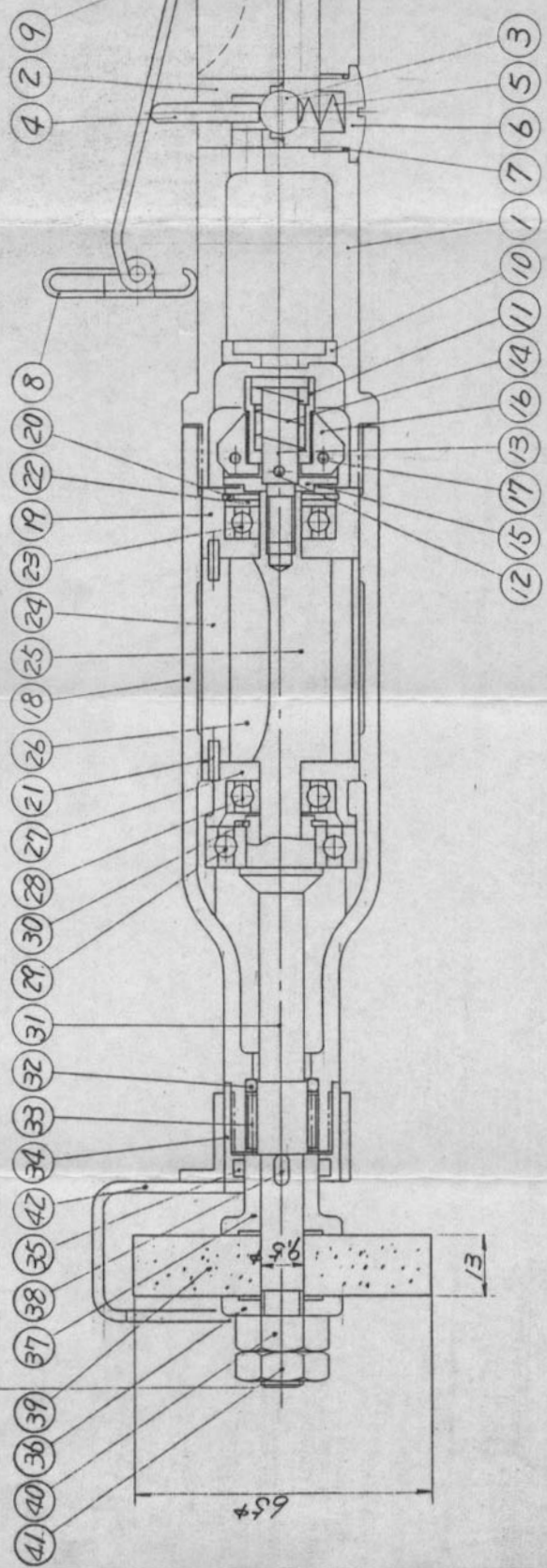


321

AIR INLE
PT 1/4



AIR PRESS 6 kg/cm²
 FREE SPEED 14,600 C.P.M.
 AIR CONS 0.9 ml/min
 WHEEL SIZE #65 x 13 x 2.5 mm
 WEIGHT 1.45 kg
 HOSE DIA 9.5 mm

APPROVED BY	NAME	AIR GRINDER	
CHECKED BY		HG-65 GTS-2	
DESIGNED BY	SCALE	DATE	DWG. NO.
<i>K. T. Takemura</i>	1	63.3.2	501x110
		YUTANI IRON WORKS CO., LTD.	

No.	PARTS No.	NAME OF PARTS	REQ'D No.	REMARK	No.	PARTS No.	NAME OF PARTS	REQ'D No.	R
1	501245	Head	1		36	501231	Bottom Flange	1	
2	553392	Throttle Bush	1		37	501230	Top Flange	1	
3	EB 3/8	Throttle Valve	1		38	K03012A	Flange Key	1	
4	NR04238	Throttle Rod	1		39	50146	Wheel	1	
5	553394	Throttle Spring	1		40	N105	Flange Nut	1	
6	11605	Throttle Cap	1		41	N205	Lock Nut	1	
7	OR-7	Throttle Cap Ring	1		42	501124	Wheel Cover	1	
8	553393	Throttle Lever	1		43	B800616	Cover Bolt	2	
9	SPW03020	Throttle Lever Pin	1		44	N81106	Cover Nut	2	
10	553194	Governor Valve Sheet	1		45	WS060	Washer	2	
11	553175C	Governor Valve	1		46				
12	KP025006	Governor Shaft Pin	1		47				
13	553177D	Governor Shaft	1		48				
14	50296	Governor Spring	1		49				
15	553181	Governor Base	1		50				
16	501173	Governor Runner	2		51				
17	NR300118	Governor Runner Pin	2		52				
18	501112B	Cylinder Case	1		53				
19	501113	Top Bearing Case	1		54				
20	SR-20	Cover Ring	1		55				
21	SPV02508.	Knock Pin	2		56				
22	553179	Bearing Cover	1		57				
23	609	Top Rotor Bearing	1		58				
24	501114	Cylinder	1		59				
25	501155	Rotor	1		60				
26	501116	Rotor Vane	4		61				
27	501117B	Bottom Bearing Case	1		62				
28	609	Bottom Rotor Bearing	1		63				
29	6002	Drive Shaft Bearing	1		64				
30	SS-15	Bearing Clip	1		65				
31	501141B	Drive Shaft	1		66				
32	OP-12	Roller Ring	1		67				
33	INA SC78	Roller Bearing	1		68				
34	501123	Bearing Cap	1		69				
35	P1183	Oil Packing	1		70				

