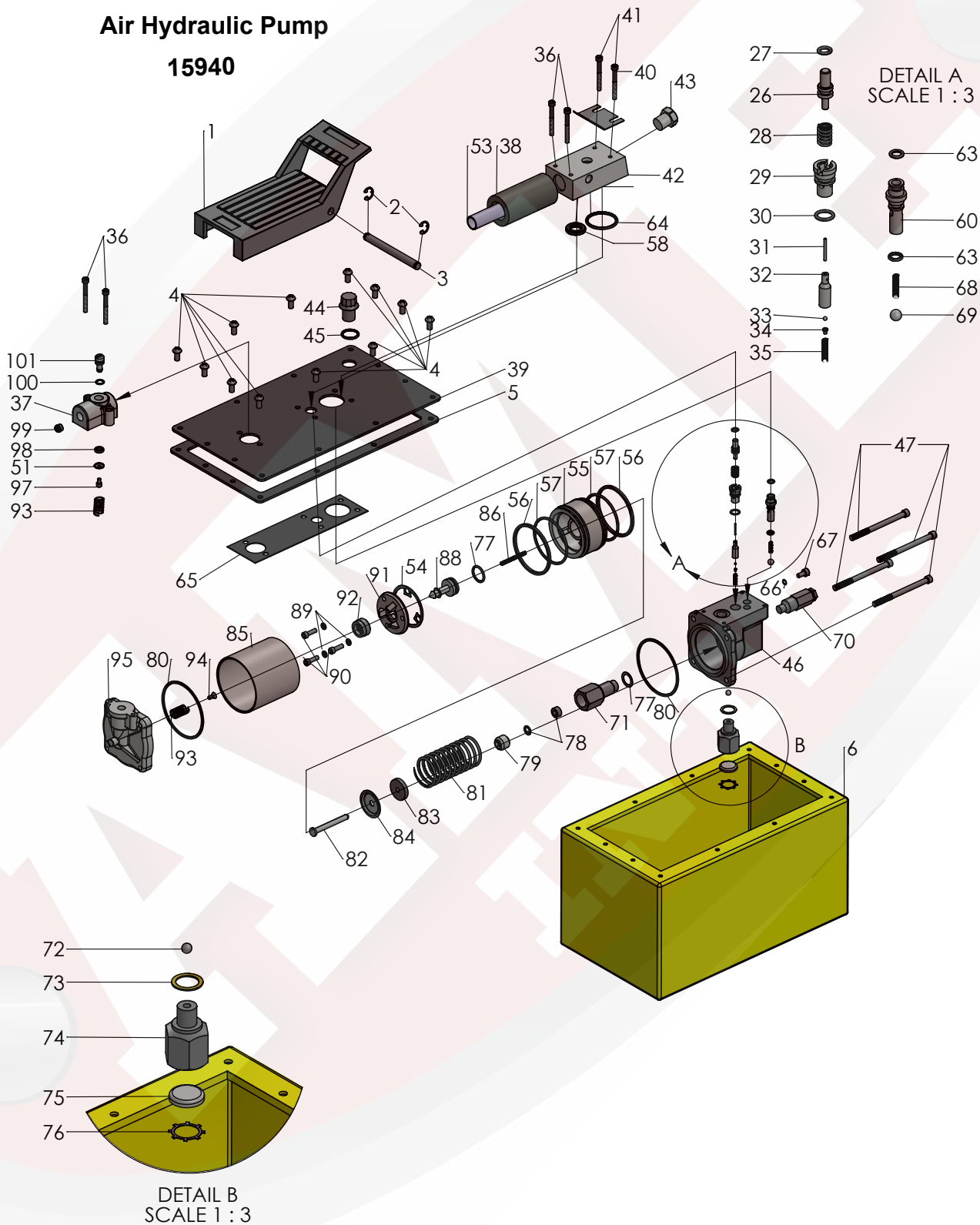




PARTS BREAKDOWN

Parts List For Air Hydraulic Pump 15940





PARTS BREAKDOWN

Parts List For Air Hydraulic Pump 15940

Item	Part No.	Stock No.	Qty	Description	Item	Part No.	Stock No.	Qty	Description
1	15940-001	41322	1	Foot Pedal	58	15940-058	*10276	1	O-Ring
2	15940-002	*11032	2	Retaining Ring	59	15940-059	*10272	1	O-Ring
3	15940-003	28386	1	Pin	60	15940-060	34378	1	Check Valve Body
4	15940-004	211060	6	Screw	61	15940-061	*250638	1	Filter Disc
5	15900-005	*33853	1	Reservoir Gasket	62	15940-062	*11088	2	Retaining Ring
5	15920-005	*46271	1	Reservoir Gasket	63	15940-063	*12522	2	O-Ring
5	15940-005	*47409	1	Reservoir Gasket	64	11010-015	*11841	1	O-Ring
6	15900-006	61243	1	Reservoir	65	15940-065	*351021	1	Gasket
6	15920-006	64153OR	1	Reservoir	66	11000-022	*10442	1	Washer
6	15940-006	61165	1	Reservoir	67	15940-067	10002	1	Cap Screw
7	15940-007	*305494	1	Decal	68	15940-068	*10445	1	Compression Spring
8	15940-008	302466	1	Spring Clip	69	15940-069	*10423	2	Steel Ball
9	15940-009	260154	1	Trade Name Decal	70	15940-070	-	-	Relief Valve
10	15940-010	251762	1	Warning Decal	71	15940-071	45278	1	Piston Cylinder
11	15920-004	211060	4	Screw	72	11010-014	*10375	1	Steel Ball
11	15940-004	252168	4	Screw	73	11010-019	*10261	1	Copper Washer
25	15940-025	*2066504	1	Foam Tube	74	15940-074	308893	1	Filter Adapter
26	15940-026	28227	1	Release Valve Button	75	15940-075	214578	1	Filter
27	15940-027	*10266	1	O-Ring	76	15940-076	214586	1	Retaining Ring
28	11010-013	*13944	1	Compression Spring	77	15940-077	*10263	1	Copper Washer
29	15940-029	34377	1	Poppet Retainer	78	15940-078	*13934	1	U-cup & Backup
30	15940-030	*15279	1	O-Ring	79	15940-079	*304295	1	Retainer
31	15940-031	13937	1	Dowel Pin	80	15940-080	*17429	2	Back up Washer
32	15940-032	29037	1	Release Valve Poppet	81	15940-081	*13938	1	Compression Spring
33	15940-033	*14443	1	Steel Ball	82	15940-082	28226	1	Piston
34	15940-034	209736	1	Ball Retainer	83	15940-083	203143	1	Bumper
35	15940-035	*13959	1	Compression Spring	84	15940-084	210994	1	Spring Guide
36	15940-036	11151	4	Cap Screw	85	15940-085	37434	1	Air Cylinder
37	15940-037	37199	1	Intake Air Valve Body	86	15940-086	*12692	1	Compression Spring
38	15940-038	*29992	1	Foam Tube	87	15940-087	*211052	1	O-Ring
39	15940-039	420965BK 2	1	Cover Plate	88	15940-088	305475	1	Exhaust Valve Stem
39	15940-039	58688BK2	1	Cover Plate	89	15940-089	*10241	3	Lock washer for #10 Bolt
39	15940-039	58706BK2	1	Cover Plate	90	15940-090	211054	3	Screw
40	15940-040	11089	2	Washer	91	15940-091	33822	1	Piston End Plate
41	15940-041	11435	2	Cap Screw	92	15940-092	*28183	1	Piston Poppet
42	15940-042	58563	1	Release Valve Body	93	15940-093	*205679	1	Compression Spring
43	15940-045	11127	1	Pressure Plug	94	15940-094	*205674	1	Screw
44	-	20937	1	Filler Cap	95	15940-095	51480	1	Rear Head
45	15940-045	*10273	1	O-Ring	96	15940-096	12691	1	Compression Spring
46	15940-046	64767	1	Pump Body	97	15940-097	13936	1	Soc. Hd Cap Screw
47	15940-047	17428	4	UNC x3-1/2	98	15940-098	28198	1	Seal Guide
51	15940-051	*28182	1	Air Valve Poppet	99	15940-099	*216296	1	Filter Disc

2347 Circuit Way, Brooksville, Florida, USA 34604
 Phone: (+1) 352-799-1111 Toll Phone: (+1) 877-775-4AME (4263)
 Fax: (+1) 352-799-1112 E-mail: sales@ameintl.net www.ameintl.net



PARTS BREAKDOWN

Parts List For

Air Hydraulic Pump

15940

52	15940-052	*251717	1	O-Ring	100	15940-100	*10267	1	O-Ring
53	15940-053	28387	1	Muffler					
54	15940-054	*28239	1	Gasket					
55	15940-055	52390	1	Piston Body					
56	15940-056	*14265	2	Piston Ring					
57	15940-057	*251835	2	O-Ring					