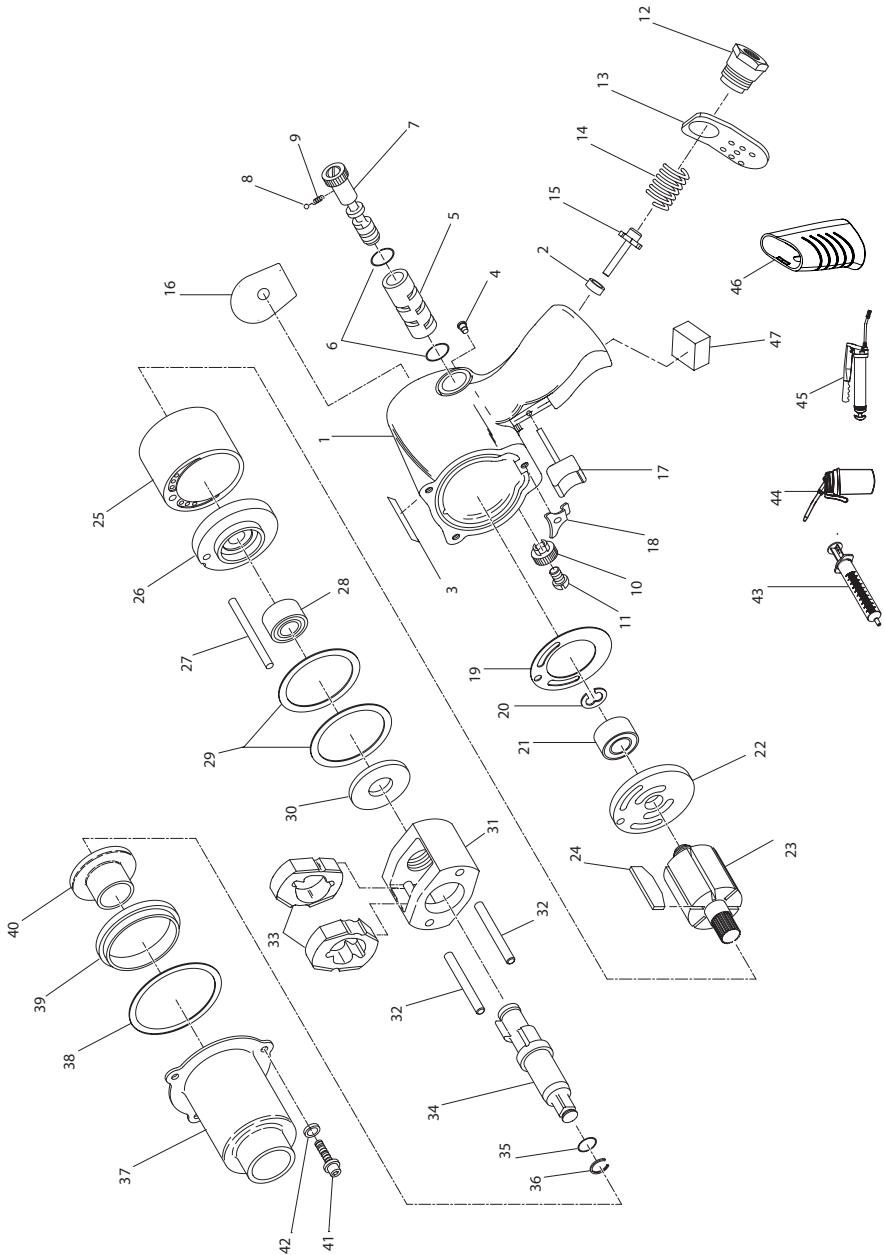


Models 231HA, 231HA-2 and 231R Series, Air Impact Wrench - Exploded View



(Dwg. TP1970)



04581286
Edition 6
December 2021

Models 231HA, 231HA-2 and 231R Series, Air Impact Wrench - Parts List

| Item | Part Description | Part Number | Item | Part Description | Part Number |
|------|--------------------------------|--------------|------|--|-------------|
| 1 | Motor Housing Assembly | 231HP-A40 | 30 | Hammer Frame Washer | 231-706 |
| 2 | Throttle Valve Seat | 131-303 | 31 | Hammer Frame Kit | 231XP-A703 |
| 3 | Warning Label | WARNING-2-99 | 32 | Hammer Pin (2) | 231-704 |
| 4 | Grease Fitting | 131-188 | 33 | Hammer (2) | 231XP-724 |
| 5 | Reverse Valve Bushing Assembly | 231-A330 | 34 | Anvil Assembly | |
| 6 | Reverse Valve Bushing Seal (2) | PS3-67 | | for 231HA, 231R-G and 231R-R Models | 231B-A626 |
| 7 | Reverse Valve | 131-329 | | for 231HA-2, 231R-G-2 and 231R-R-2 Models (2" Extended Anvil) | 231B-A414 |
| 8 | Reverse Valve Detent Ball | AV1-255 | 35 | Retainer O-Ring | R1A-159 |
| 9 | Reverse Valve Detent Spring | 131-664 | 36 | Socket Retainer | 2135-425 |
| 10 | Reverse Valve Knob | 131-666 | 37 | Hammer Case Assembly | 131-A927 |
| 11 | Reverse Valve Screw | 131-665 | 38 | Hammer Case Gasket | 230-36 |
| 12 | Inlet Bushing | 131-565 | 39 | Hammer Case Pilot | 405-800 |
| 13 | Exhaust Deflector | 131-23 | 40 | Hammer Case Bushing | 705-941 |
| 14 | Throttle Valve Spring | 231G-51 | 41 | Hammer Case Cap Screw (3) | 131-638 |
| 15 | Throttle Valve | 131-50 | 42 | Hammer Case Lock Washer (3) | 131-637 |
| 16 | Nameplate | 231HA-301 | 43 | Grease Gun | 230-228 |
| 17 | Trigger | 231H-A93 | 44 | Oil | 405-M01 |
| 18 | Trigger Retainer | 131-656 | 45 | Grease | 105-4T |
| 19 | End Plate Gasket | PF800-283 | * | Tune Up Kit (includes items 2, 6(2), 8, 9, 14, 15, 19, 20, 21, 24, 28, 35, 36, and 38) | 231HP-TK1 |
| 20 | Rear Rotor Bearing Retainer | 131-118 | | | |
| 21 | Rear Rotor Bearing | 402-22 | | | |
| 22 | Rear End Plate | 131-12 | * | Hammer Kit (for 231HA, 231R-G and 231R-R Models Standard Length) (includes items 33(2), 34, 38, 41(3) and 42(3)) | 231B-THK1 |
| 23 | Rotor | 231-53 | | | |
| 24 | Vane (Set of 6 Vanes) | 2131-42A-6 | | | |
| 25 | Cylinder | 131-3 | * | Hammer Kit (for 231HA-2, 231R-G-2 and 231R-R-2 Models Extended Length) (includes items 33(2), 34, 38, 41(3) and 42(3)) | 231B-THK2 |
| 26 | Front End Plate | 131-11 | | | |
| 27 | Cylinder Dowel | 230-98 | | | |
| 28 | Front Rotor Bearing | 4U-97 | 47 | Exhaust Silencer | 235-311 |
| 29 | Motor Clamp Washer (2) | 227-207 | 46# | Grip | 231G-747 |

* Indicates not illustrated.

Grip for use with original housing only for 231R-G, 231R-G-2, 231R-R and 231R-R-2 models. Not compatible with 231HA and 231HA-2 models.

Parts and Maintenance

When tool life has expired, it is recommended that the tool be disassembled, degreased and parts separated by material for proper recycling. Tool repair and maintenance should only be carried out by an authorized Service Center. Refer all communications to the nearest **Ingersoll Rand** office or distributor.

Related Documentation

Manuals can be downloaded from ingersollrand.com

For additional information, refer to:

Air Impact Wrench Product Safety Information Manual 04580916

Air Impact Wrench Product Information Manual 47584133

Declaration of Conformity 47624079001