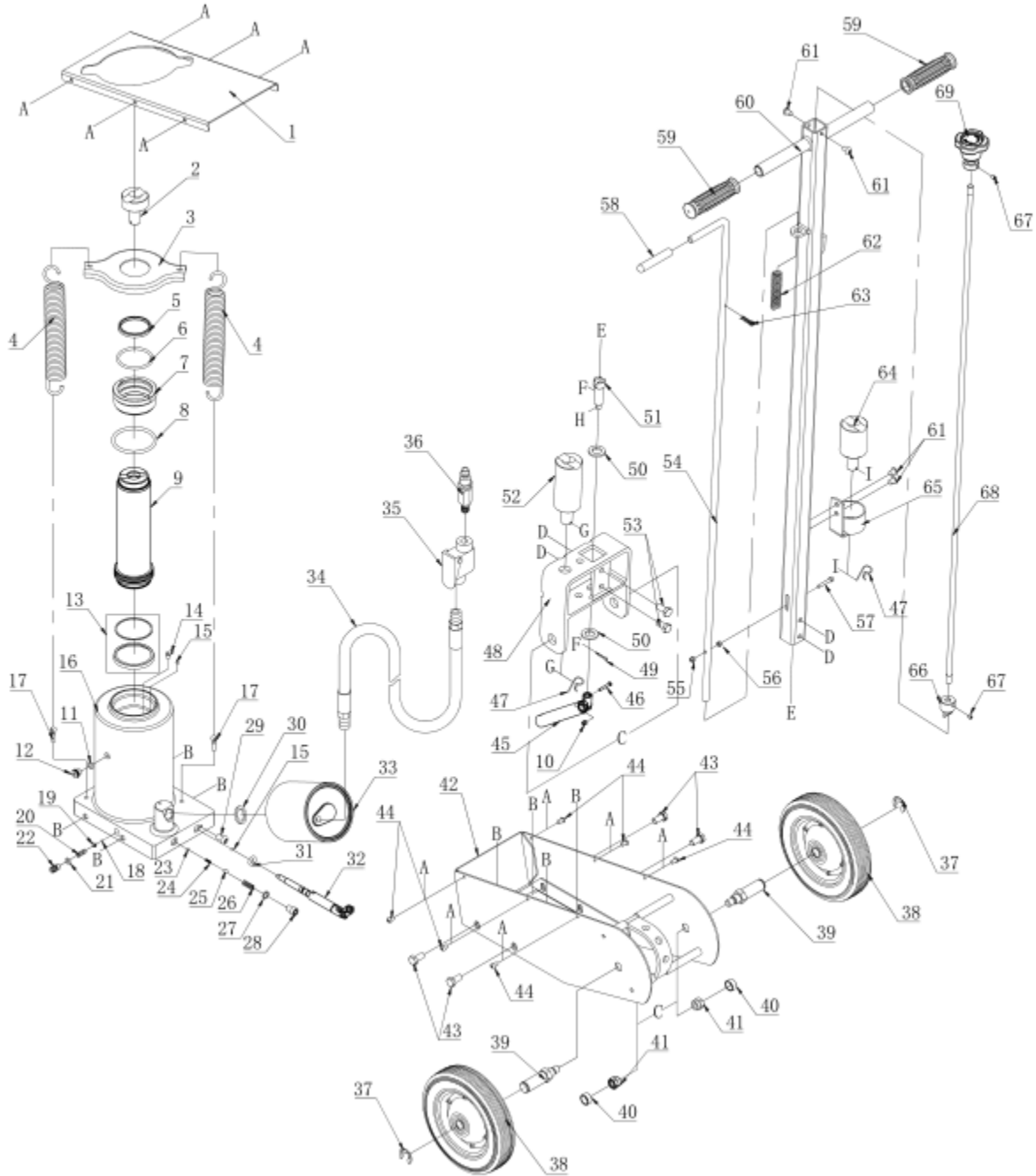


EXPLODED VIEW & PARTS LIST



EXPLODED VIEW & PARTS LIST (CONT.)



NO.	DESCRIPTION	QUANTITY
1	RACK COVER	1
2	SADDLE #1	1
3	SPRING SEAT	1
4	SPRING	2
5	DUST RING	1
6	O-RING	1
7	LIMIT RING	1
8	O-RING	1
9	PISTON ROD ASSY	1
10	NUT	1
11	O-RING	1
12	SCREW	1
13	U-RING	1
14	STEEL BALL BAFFLE	1
15	STEEL BALL	2
16	PUMP	1
17	BOLT	2
18	STEEL BALL	1
19	STEEL BALL SEAT	1
20	SPRING	1
21	O-RING	1
22	SCREW	1
23	STEEL BALL	1

NO.	DESCRIPTION	QUANTITY
24	SPRING	1
25	STEEL BALL	1
26	SPRING	1
27	WASHER	1
28	SCREW	1
29	SCREW	1
30	WASHER	1
31	O-RING	1
32	RELEASE VALVE	1
33	AIR PUMP	1
34	AIR HOSE	1
35	AIR VALVE	1
36	AIR HOSE CONNECTOR	1
37	RING	1
38	WHEEL	2
39	AXLE	2
40	BUSHING	2
41	NUT	2
42	RACK COMPONENTS	1
43	BOLT	4
44	SCREW	6
45	SLIDING SLEEVE ASSY	1
46	SCREW	1

NO.	DESCRIPTION	QUANTITY
47	R-PIN	2
48	HANDLE BASE	1
49	PIN	1
50	WASHER	2
51	CONNECTING SHAFT	1
52	SADDLE #3	1
53	BOLT	2
54	HANDLE	1
55	NUT	1
56	NUT	1
57	SCREW	1
58	HANDLE COVER	1
59	HANDLE COVER	2
60	CONTROL HANDLE	1
61	CREW	4
62	SPRING	1
63	R-PIN	1
64	SADDLE #2	1
65	HEAD FRAME ASSY	1
66	RELEASE CONNECTOR	1
67	SCREW	2
68	CONNECTING ROD	1
69	HANDLE WHEEL	1