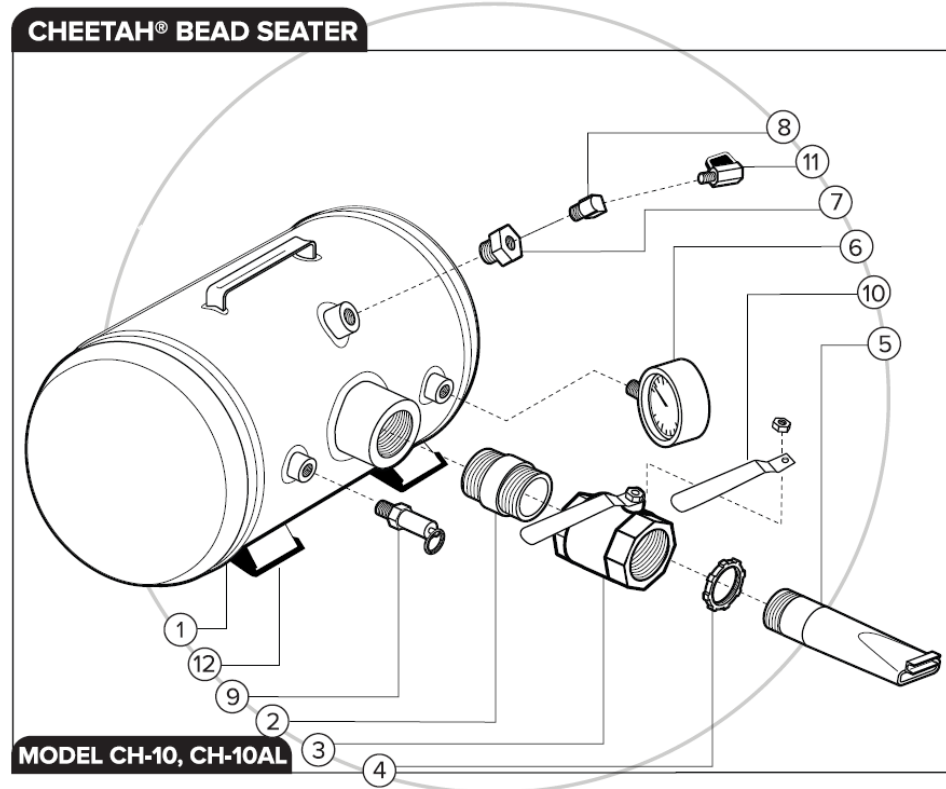
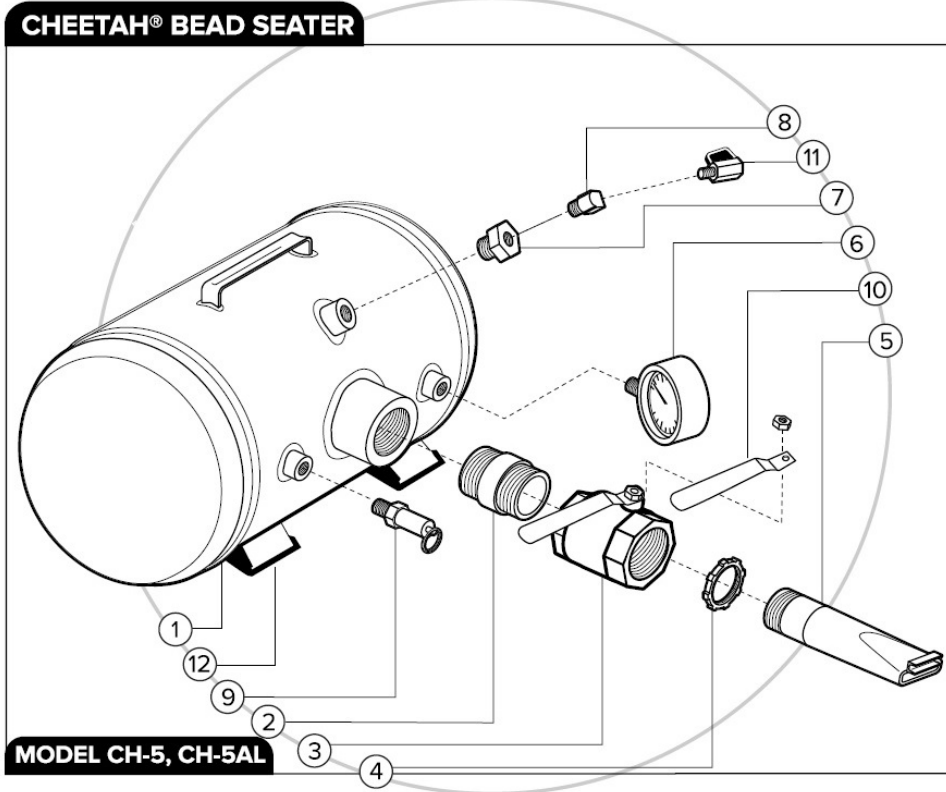


# Notes



# Notes

## CH-5 Replacement Parts

ID	Item #	Description
2	01.104	Nipple 1.5"
3	02.102	Discharge Valve, CH-5
4	02.107	Lock Nut for CH-5 Barrel
5	02.103	Threaded Barrel, CH-5
6	01.106-200	Air Pressure Gauge 1/4 NPT 200 PSI
7	01.107	Reducer, Bushing 3/4 x 1/4
8	03.104	Elbow 1/4 NPT M x 1/4 NPT F x 90 Street Brass
9	05.102	Valve, Safety Release 120psi
10	01.230	Handle & Nut Only For Cheetah Discharge Valves
11	04.103	Valve, Ball Silver/Black
12	12607	Rubber Feet For Bead Seater
12	12608	Screw for Rubber Feet

## CH-10 Replacement Parts

ID	Item #	Description
2	02.104	Nipple 2"
3	03.102	Discharge Valve, CH-10
4	03.107	Lock Nut for CH-10 Barrel
5	03.103	Threaded Barrel, CH-10
6	01.106-200	Air Pressure Gauge 1/4 NPT 200 PSI
7	01.107	Reducer, Bushing 3/4 x 1/4
8	03.104	Elbow 1/4 NPT M x 1/4 NPT F x 90 Street Brass
9	05.102	Valve, Safety Release 120psi
10	01.230	Handle & Nut Only For Cheetah Discharge Valves
11	04.103	Valve, Ball Silver/Black
12	12607	Rubber Feet For Bead Seater
12	12608	Screw for Rubber Feet