



**TARAY**  
INTERNATIONAL  
C O R P O R A T I O N

## Private Label Nail Hole Repair Extruder



**REPAIRS NAIL HOLES  
IN TUBELESS TIRES**

*"Our business is global... our service is personal."*

1112 North Collier Boulevard, Marco Island, Florida 34145  
Phone: (239) 394-6099 • Toll Free: (800) 526-0049 • Fax: (239) 394-5388  
Website: <http://www.taray.com>  
E-Mail: [sales@taray.com](mailto:sales@taray.com)

# NAIL HOLE REPAIR EXTRUDER

**SAFETY WARNING:** BARREL OF REPAIR EXTRUDER GETS VERY HOT. HOLD REPAIR EXTRUDER BY HANDLE ONLY. FIRST DEGREE BURNS MAY RESULT IF BARREL TOUCHES THE SKIN.

## ***SERVICE REQUIREMENTS***

**ELECTRICAL:** 110V/20 AMP SERVICE IS NEEDED FOR HEATER BOX (220V UNITS ALSO AVAILABLE).  
**AIR:** OPERATING PRESSURE FOR AIR MOTOR IS 100 PSI (6.5 BAR)  
AIR MUST BE CLEAN AND LUBRICATED.

**CAUTION: MAXIMUM PRESSURE TO AIR MOTOR IS 110 PSI, EXCEEDING THIS PRESSURE MAY DAMAGE AIR MOTOR AND VOID WARRANTIES.**

**NOTE:** THE NAIL HOLE REPAIR EXTRUDER MUST HAVE A LUBRICATOR IN DIRECT AIR SUPPLY.

## ***OPERATION***

LET REPAIR EXTRUDER RUN FOR ONE MINUTE TWICE A DAY WITHOUT ANY ROPE RUBBER TO ASSURE MOTOR IS PROPERLY LUBRICATED.

### ***PREPARATION:***

1. LOOSEN NUT THAT HOLDS NOZZLE TO BARREL.
2. PULL NOZZLE AWAY FROM BARREL.
3. REMOVE ANY RUBBER PRESENT FROM BARREL AND NOZZLE.
4. REPLACE NOZZLE.

**CAUTION: OPERATION WITH ANY DIRT OR CURED RUBBER IN BARREL MAY CAUSE REPAIR EXTRUDER TO BIND. IF EXTRUDER SLOWS DOWN OR BINDS, FOLLOW THIS PROCEDURE TO RETURN UNIT TO SERVICE.**

1. REMOVE AIR COUPLER FITTING FROM BOTTOM OF AIR DRILL.
2. POUR LIGHT AIR TOOL OIL INTO AIR OPENING UNTIL DRILL IS FULL.
3. PULL TRIGGER TO ALLOW OIL TO ENTER AIR MOTOR.
4. REPEAT STEPS 2 AND 3.
5. REPLACE AIR COUPLER FITTING.
6. ATTACH LUBRICATED AIR SUPPLY TO EXTRUDER AND PRESS TRIGGER.

**CAUTION: DO NOT DISASSEMBLE AIR MOTOR. DISASSEMBLY OF AIR MOTOR VOIDS SIX MONTH WARRANTY.**

### ***HEATING:***

1. TURN HEATING BOX ON AND SET TEMPERATURE CONTROL AT TEMPERATURE RECOMMENDED BY YOUR ROPE RUBBER MANUFACTURER. CHOOSE LOWEST SETTING THAT WILL MAINTAIN EXTRUDABLE RUBBER.
2. ALLOW MINIMUM OF 15 MINUTES FOR REPAIR EXTRUDER TO WARM UP. GREEN LIGHT WILL SHUT OFF WHEN EXTRUDER REACHES DESIRED TEMPERATURE.
3. AFTER THREE MINUTES OF USE, EXTRUDER BARREL WILL COOL DOWN. RETURN TO HEATER BOX FOR RE-HEATING TO DESIRED TEMPERATURE.
4. PILOT LIGHT WILL SHUT OFF AGAIN WHEN EXTRUDER IS READY FOR USE.

**CAUTION: CLEAN UNIT THOROUGHLY IF UNUSED FOR 20 MINUTES.**

### ***NAIL HOLE PREPARATION:***

1. CLEAN AND BUFF NAIL HOLE USING RECOMMENDED HAND BUFFER.
2. MAKE SURE NAIL HOLE IS TAPERED ON INSIDE AND OUTSIDE OF TIRE.
3. DO NOT CEMENT NAIL HOLE.

### ***FILLING THE NAIL HOLE:***

1. FEED 12" (30CM) OF ROPE RUBBER INTO INTAKE HOLE ON BARREL.
2. PLACE NOZZLE IN THE NAIL HOLE ON INSIDE OF TIRE AND FILL.
3. ONLY 10" (25CM) OF ROPE RUBBER SHOULD HANG FROM INTAKE HOLE.
4. USE A KNIFE HANDLE TO TRIM AND FLATTEN EXTRUDED RUBBER.
5. INSTALL RUBBER PATCH OVER REPAIR ON INSIDE OF TIRE ACCORDING TO RUBBER PATCH MANUFACTURERS RECOMMENDATIONS.

**CAUTION: IF ANOTHER NAIL HOLE IS NOT GOING TO BE REPAIRED IMMEDIATELY, EXTRUDE UNUSED PORTION OF RUBBER FROM BARREL.**

## ***CLEANING INSTRUCTIONS***

### ***IF REPAIR EXTRUDER IS TO BE LEFT UNUSED FOR MORE THAN 20 MINUTES***

1. CUT OFF ROPE RUBBER GOING INTO INTAKE HOLE OF BARREL AND EXTRUDE REMAINING RUBBER OUT OF BARREL.
2. DISCONNECT AIR AND ELECTRICITY AND PLACE REPAIR EXTRUDER BACK INTO HEATER BOX FOR STORAGE.

### ***DAILY:***

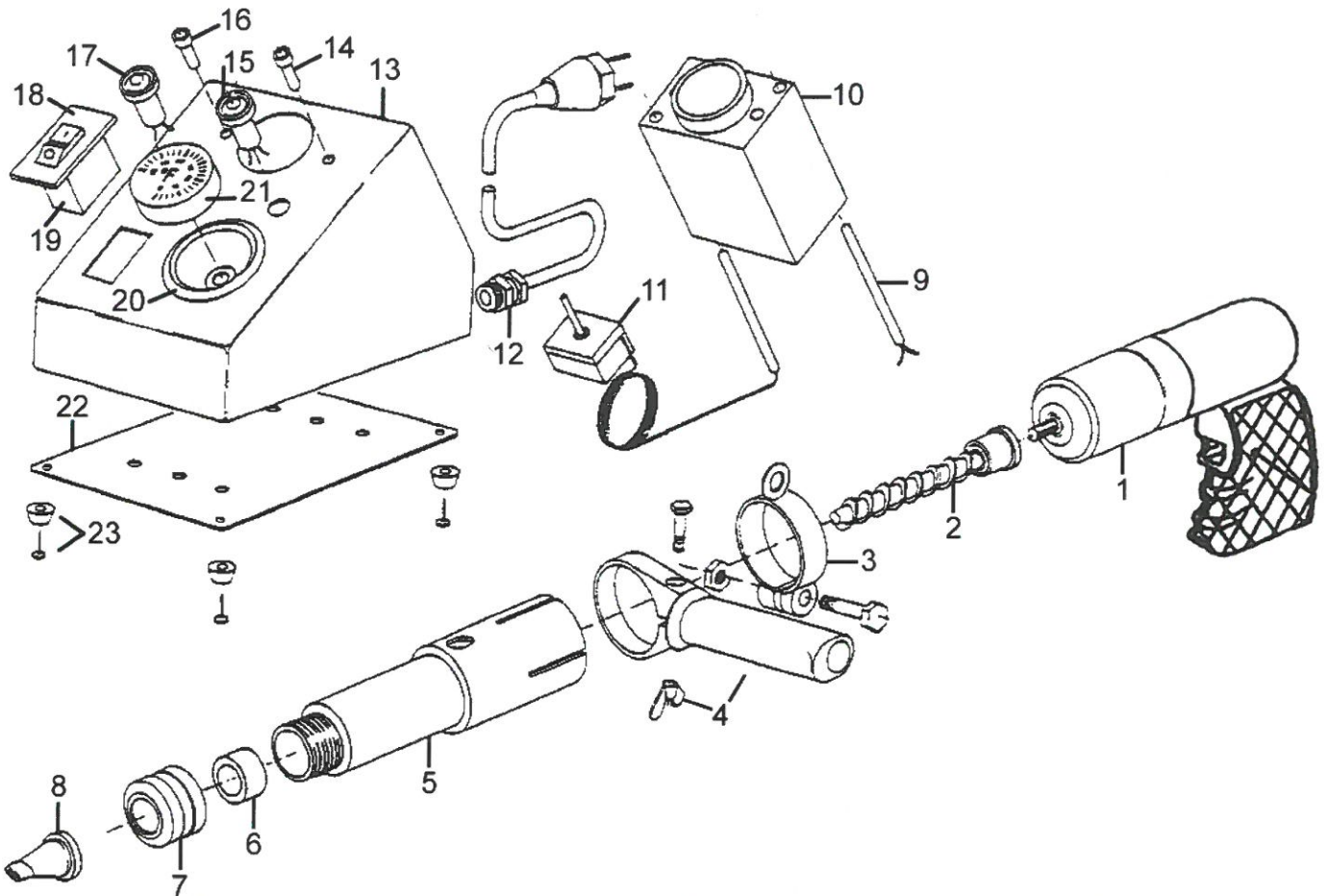
1. REMOVE NOZZLE AND EXTRUDE ANY REMAINING RUBBER FROM BARREL.
2. AFTER BARREL IS COMPLETELY COOLED, CLEAN NOZZLE IN ANY INDUSTRIAL STRENGTH SOLVENT TO REMOVE ALL RUBBER PARTICLES. USE TARAY/ADVANTAGE™ EXTRUDER CLEANER TO CLEAN BARREL.
3. CHECK AIR LUBRICATOR. IF NECESSARY, ADD LIGHT WEIGHT NON-DETERGENT OIL.

**CAUTION: DO NOT INSERT AIR DRILL IN SOLVENT.**

## **LIMITED WARRANTY**

This warranty is made in lieu of any and all warranties, either expressed or implied. This Nail Hole Extruder is warranted to be free from defects in material or workmanship. Taray International Corporation will replace at no charge, based upon our sole analysis, any parts or units which upon inspection by our certified technician is found to contain defective workmanship or defective materials within six (6) months of the original purchase date. Taray International Corporation has made no affirmations of fact nor any promises relating to the Nail Hole Extruder being sold that has become the basis of our agreement. Furthermore, Taray International Corporation has made no affirmation of fact or promise relating to the Nail Hole Extruder being sold that has created or which amounts to an express warranty that the goods will conform to any other affirmation or promise contained outside this agreement. Any description of the Nail Hole Extruder contained in this agreement is for the sole purpose of identifying the Nail Hole Extruder and has not been made part of the bargain to purchase, nor has it created or amounted to any express warranty. Taray International Corporation makes no warranty of merchantability with respect to this Nail Hole Extruder being sold, other than to state that this product is manufactured for the use in filling nail holes on buffed tires. Since Taray International Corporation has no control over the conditions or circumstances under which this product is used, no liability for any incidental or consequential damages to any person or property which may result from the use of this Nail Hole Extruder will be assumed. Accordingly, there are no warranties, expressed or implied, which extend beyond the face of this Limited Warranty. "This Nail Hole Extruder is sold as is and with all faults other than expressly stated in this Limited Warranty".

# Private Label Nail Hole Extruder



Ref. No.	Part No.	Description
1	67052	AIR DRIVE
2	67051	EXTRUDER SCREW
3	67028	CLAMP WITH SCREW
4	67029	HANDLE
5	67030	CONTROL BODY
6	67031	BUSHING
7	67025	NOZZLE ADAPTER
8	67040	FLAT NOZZLE
9	68514	HEAT ELEMENT 110V
10	67017	HEATER CORE BOX
11	68515	THERMOSTAT
12	67004	CORD FITTING

Ref. No.	Part No.	Description
13	67014	BOX SHELL
14	67012	SCREW FOR HEATER BOX
15	68520	PILOT LIGHT
16	67012	SCREW FOR HEATER BOX
17	68520	PILOT LIGHT
18	67009	METAL PLATE ADAPTER
19	67013	SWITCH
20	67008	METAL RING
21	68519	THERMOSTAT KNOB
22	67015	METAL PLATE / SCREEN
23	67016	RUBBER GROMMETS