

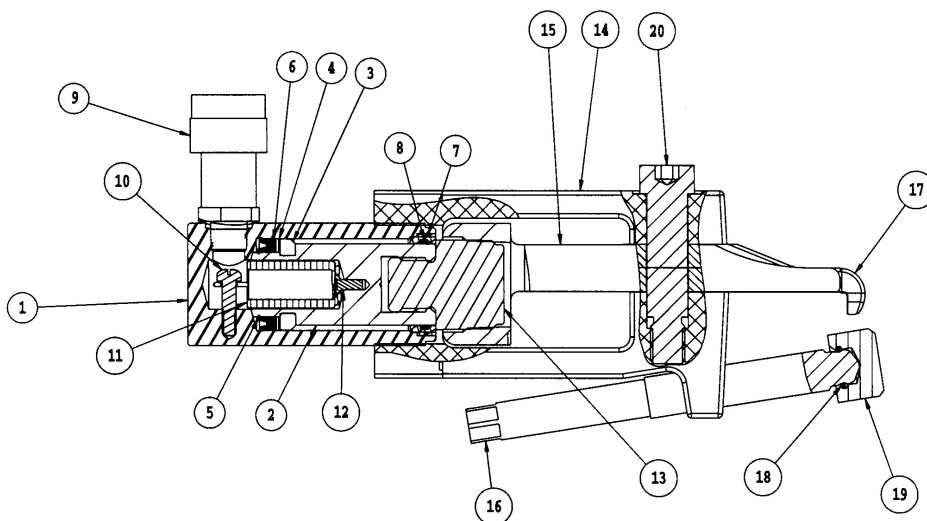


INSTRUCTION MANUAL

Parts List For OTR Giant Tire Bead Breaker Model 11050

! WARNING !

To avoid serious personal injury, always wear proper protective gear, such as hard hats, safety glasses, gloves, and steel toe shoes when using hydraulic equipment. Failure to chock the wheels and crib the vehicle can result in Serious injury or death. Always deflate tires before removing a wheel, a rim, or part of a rim clamp or nut. If you do not deflate the tire, the tire could explode, causing serious injury or death. Always stand to one side of the rim when using the bead breaker. Standing to one side of the bead breaker allows you to maintain control of the bead breaker. If it is not seated properly and flies off the rim, the bead breaker could cause serious injury or death.



Item No	Part	Stock	Qty	Description
1	11050-001	G469005	1	Base (not serviced)
2	11050-002	DA2283040	1	Plunger
3	11050-003	G382107	1	Bearing
4	11050-004	*G384108	1	Washer
5	11050-005	*C611049	1	Retainer Ring
6	11050-006	*CB6630341	1	U-Cup
7	11050-007	G385044	1	Stop Ring
8	11050-008	*G416044	1	Wiper
9	16060	10606	1	Coupler
10	11050-010	*G836028	1	Screw

Item #1, base, is not a servicable item. Order AME Intl replacement cylinder 13010

* Indicates items included in, and available only as part Repair Kit 11050-RK





INSTRUCTION MANUAL

Parts List For OTR Giant Tire Bead Breaker Model 11050

! WARNING !

To avoid serious personal injury, always wear proper protective gear, such as hard hats, safety glasses, gloves, and steel toe shoes when using hydraulic equipment. Failure to chock the wheels and crib the vehicle can result in Serious injury or death. Always deflate tires before removing a wheel, a rim, or part of a rim clamp or nut. If you do not deflate the tire, the tire could explode, causing serious injury or death. Always stand to one side of the rim when using the bead breaker. Standing to one side of the bead breaker allows you to maintain control of the bead breaker. If it is not seated properly and flies off the rim, the bead breaker could cause serious injury or death.



Item	Part	Stock	Qty	Description
11	11050-011	L202110	1	Spring
12	11050-012	DA2286028	1	Screw
13	11050-013	202179	1	Adapter
14	11050-014	U972078-001	1	Frame
15	11050-015	U972078-056	1	Clevis
16	11000-005	34184	1	Set Screw
17	11000-007	36958	1	Hook
18	11000-010	DA11816049	1	Retainer Ring
19	11000-006	28705	1	Pressure Nut
20	11000-008	22469	1	Screw

2347 Circuit Way, Brooksville, Florida, USA 34604
Phone: (+1) 352-799-1111 Toll Phone: (+1) 877-775-4AME (4263)
Fax: (+1) 352-799-1112 E-mail: sales@ameintl.net www.ameintl.net