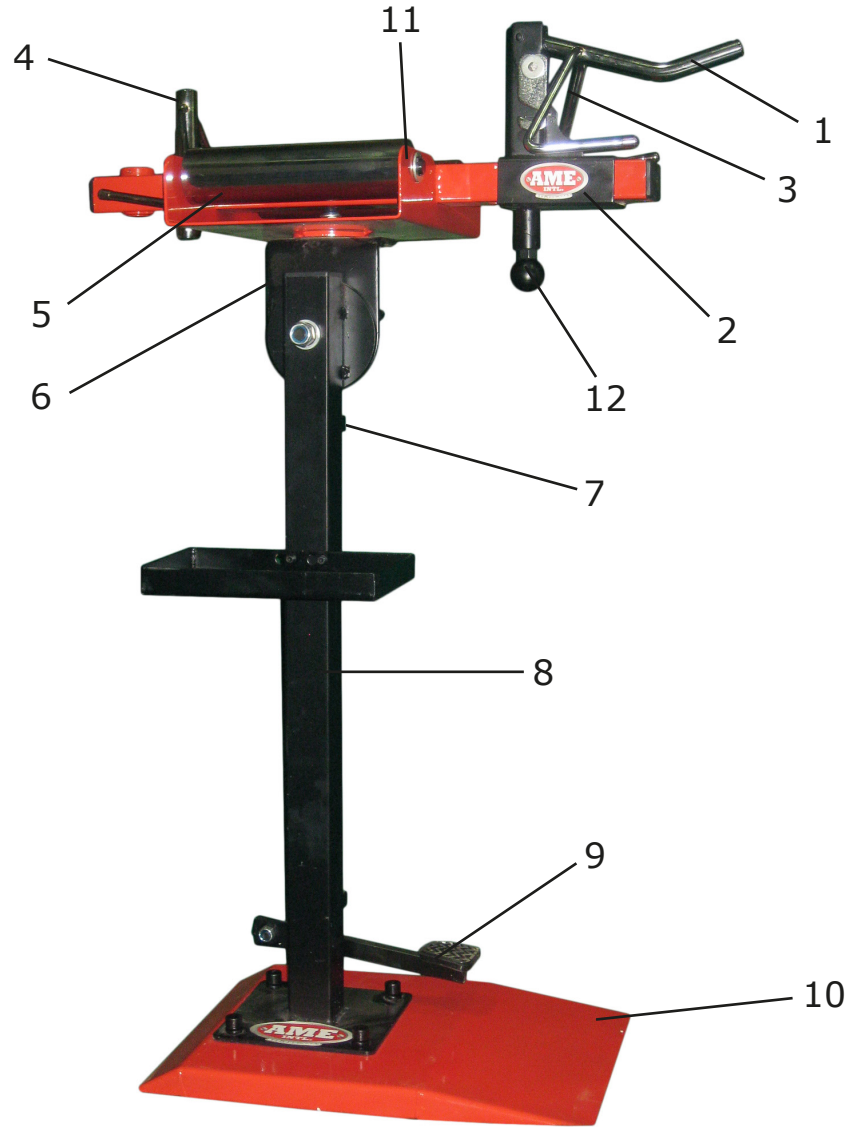




# INSTRUCTION MANUAL & PARTS BREAKDOWN



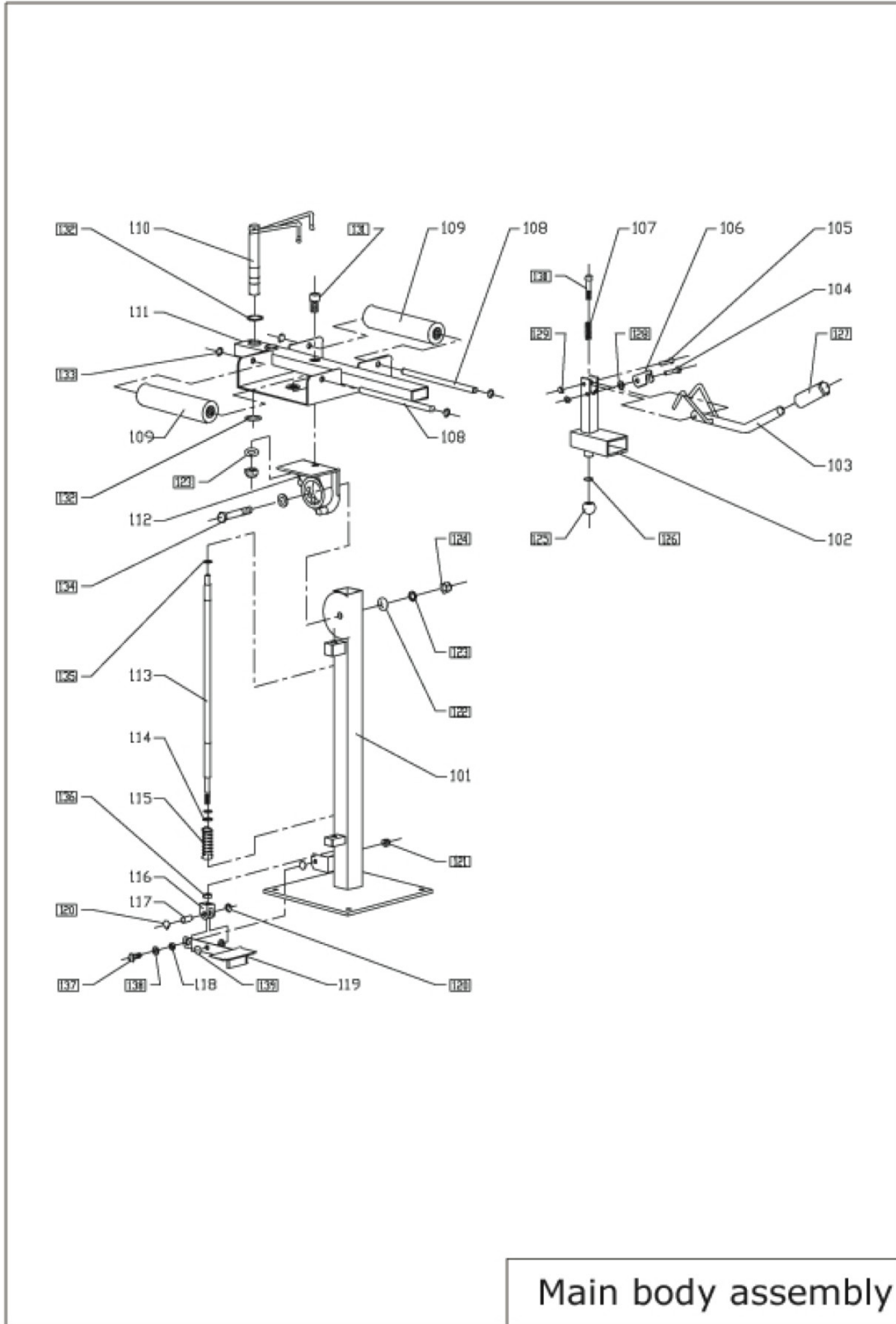
- 1. Spread hook sets1
- 2. Sliding bush
- 3. Locking plate
- 4. Spread hook sets2

- 5. Roller
- 6. Turnplate
- 7. Guiding pole
- 8. Pressure spring

- 9. Foot board
- 10. Base
- 11. Roller support
- 12. Adjustable bar of sliding bush



# INSTRUCTION MANUAL & PARTS BREAKDOWN



Main body assembly



# INSTRUCTION MANUAL & PARTS BREAKDOWN

No.	Code	Description	Quantity
101	410000	Post	one
102	210000	Sliding bush	one
103	230000	Spread hook sets2	one
104	200002	Screw 2	one
105	200001	Screw 1	one
106	200003	Locking plate	one
107	200006	Pressure spring	one
108	100001	Axis of roller	two
109	360000	Roller sets	two
110	220000	Spread hook sets1	one
111	110000	Roller support	one
112	420000	Turn plate welding sets	one
113	400001	Pull rod	one
114	400003	Retainer ring	one
115	400002	Pressure spring	one
116	400005	Connector	one
117	400004	Pin roll	one
118	300003	Spacer bush	one
119	430000	Foot board	one
120		Circlip for shaft 12	two
121		Lock nut M10	one
122		Even gasket 16	three
123		Grower gasket 16	two
124		Lock nut M16	two



# INSTRUCTION MANUAL & PARTS BREAKDOWN

125		Ball handle BM10X32	1
126		Hexagon thin nut M10	1
127		Rubber cover	1
128		Even gasket 8	1
129		Lock nut M8	2
130		Socket cap screw M10X50	1
131		Socket cap screw M16X30	1
132		Circlip for shaft 25	2
133		Circlip for shaft 14	4
134		Hexagon head bolt M16X90	1
135		Circlip for shaft 16	2
136		Hexangular nut M10	1

NO.	Code	Description	Quantity
137		Even gasket 10	2
138		Hexagon head bolt M10X25	1
139		Even gasket 12	2
140			