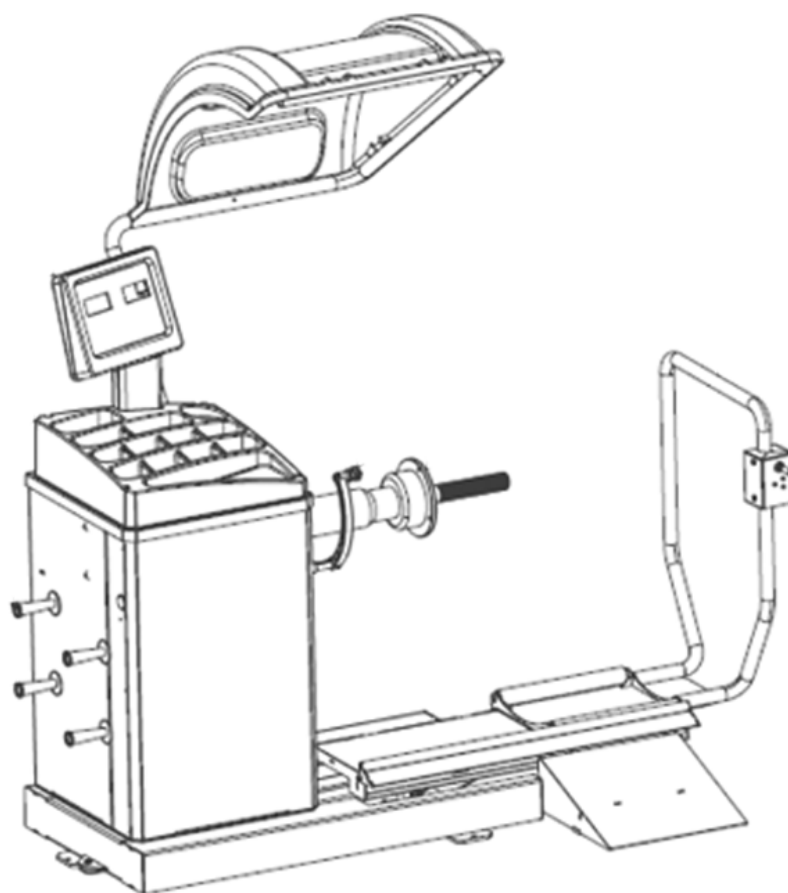


DISPLAY TRUCK WHEEL BALANCER

Pezzi di ricambio / Spare parts list



Code: 4-136622

Production date: 07 / 2022

I

Sul presente documento sono stati evidenziati con colore grigio i ricambi consigliati e indicati in grassetto i codici che sono variati rispetto a quelli riportati nella precedente versione del 07/19

EN

In this document, the recommended spare parts have been highlighted in gray, while in bold you find those codes which are different if compared with the previous version dated 07/19

DE

Im vorliegenden Dokument wurden die empfohlenen Ersatzteile in grauer Farbe hervorgehoben; die Teilenummern in Fettdruck haben sich bezugnehmend auf die vorherige Version vom 07/19 geändert.

FR

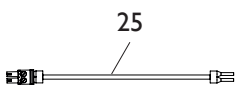
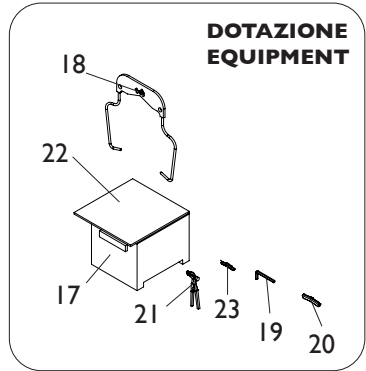
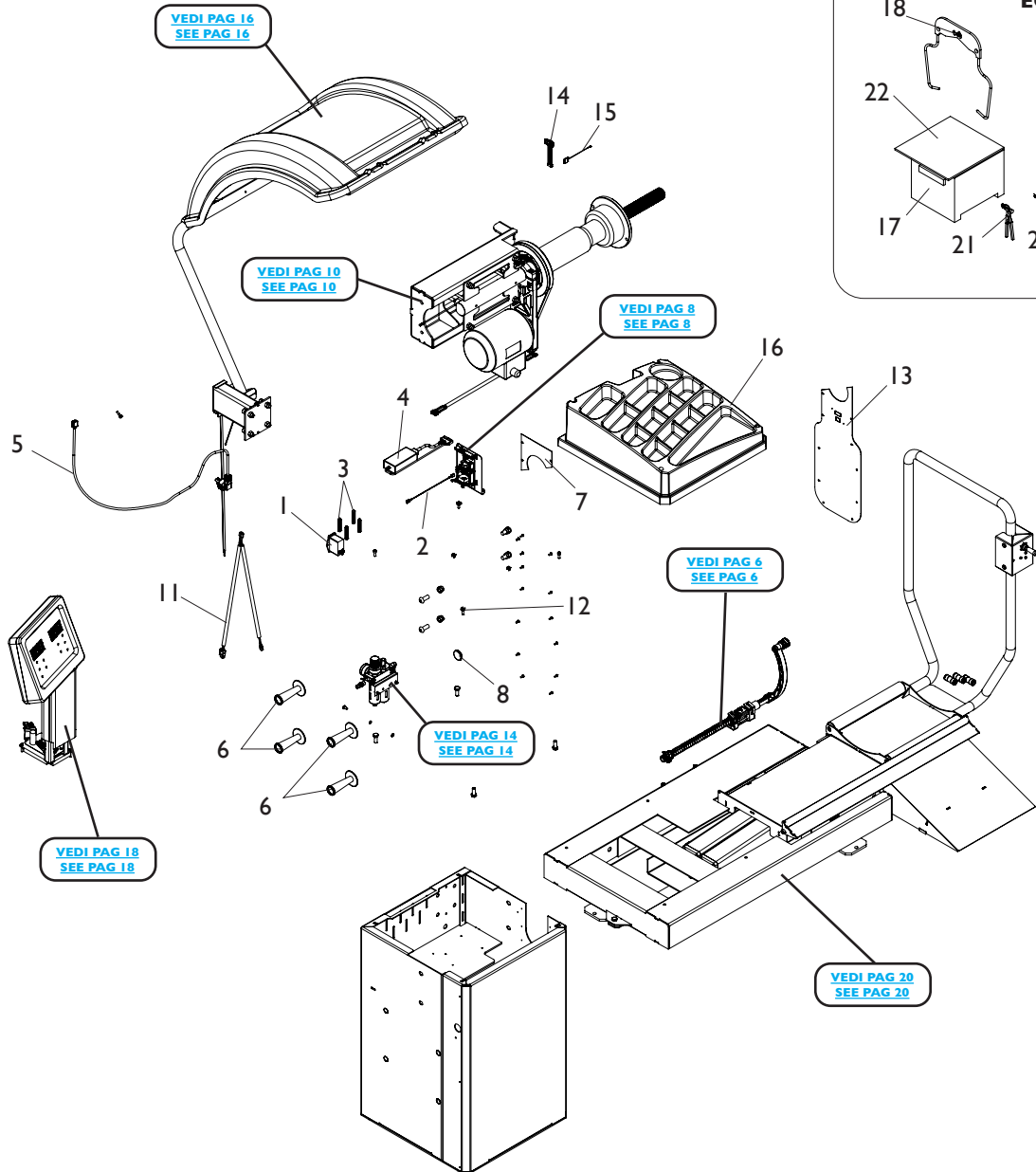
Dans ce document, les pièces de rechange préconisées sont soulignées en gris, tandis que les références différentes par rapport à la version précédente du 07/19 sont en gras

SOMMARIO

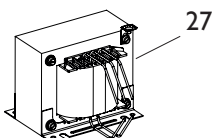
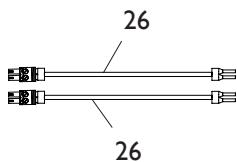
CONTENTS

COMPLESSIVO OVERALL.....	4
GRUPPO RILEVATORE INTERNO INTERNAL DETECTOR GROUP	6
GRUPPO PANNELLO ALIMENTAZIONE POWER PANEL GROUP	8
GRUPPO OSCILLANTE OSCILLATING GROUP.....	10
GRUPPO MOTORE MOTOR GROUP	12
GRUPPO FILTRO FILTER GROUP	14
GRUPPO PROTEZIONE RUOTA WHEEL PROTECTION GROUP.....	16
GRUPPO DISPLAY DISPLAY GROUP.....	18
GRUPPO SOLLEVATORE LIFTER GROUP	20
GRUPPO CARRELLO SOLLEVATORE CARRIAGE LIFTER GROUP.....	22

COMPLESSIVO OVERALL



fino alla matr. 922020201
up to S/N 922020201



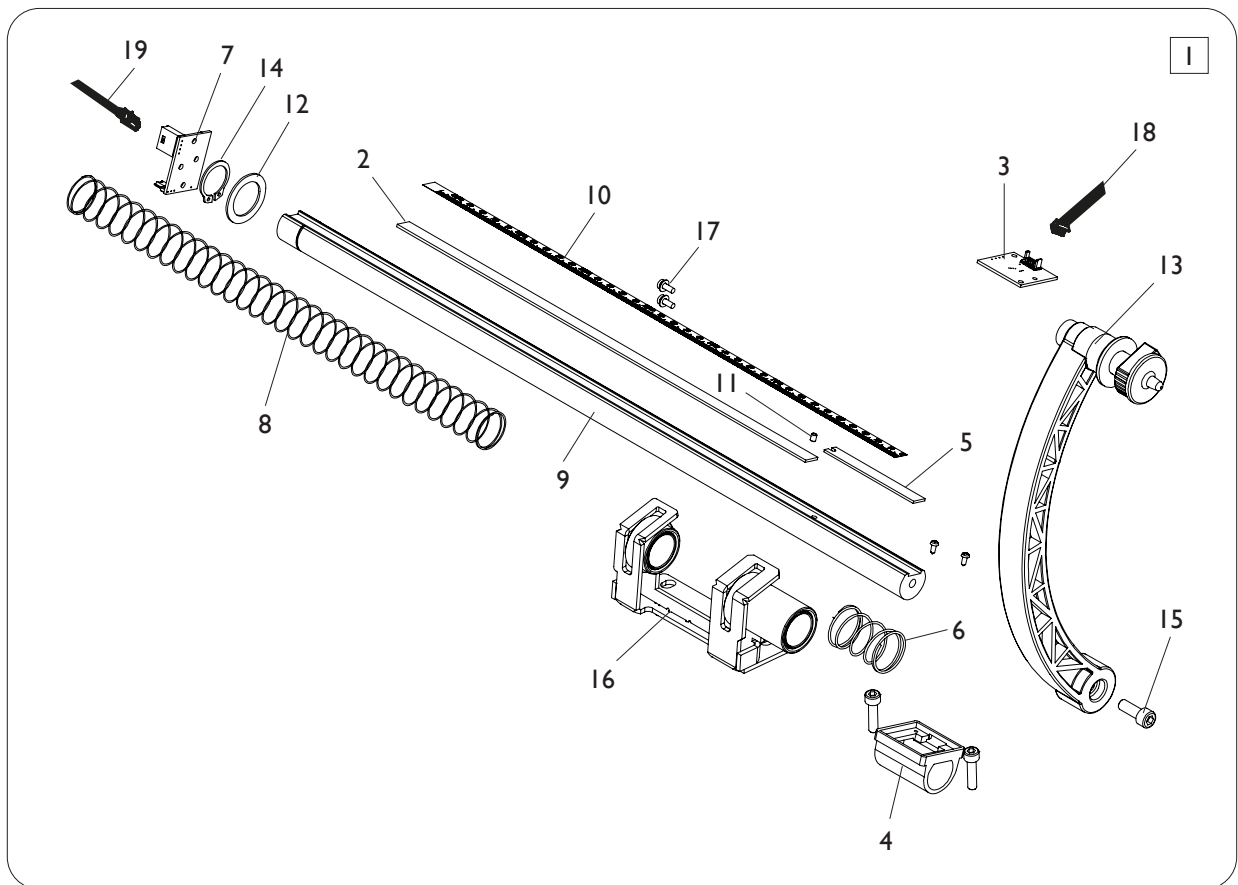
dalla matr. 922020202
from S/N 922020202

SOLO VERSIONE 110V
ONLY 110V VERSION

Rif. Ref.	Codice Code	Descrizione	Description
1	B-73-1000005	INTERUTTORE	POWER SWITCH
2	B-73-1000010	CAVO DI MASSA	GROUND WIRE
3	B-73-1000021	FERMO	STOPPER
4	B-73-1000100	ADATTATORE ALIMENTAZIONE	POWER SUPPLY ADAPTER ASSEMBLY
5	TB-E-1002100	CAVO ALIMENTAZIONE	POWER CABLE
6	TB-S-0100009	CONE HANG HANDLE	SUPPORTO CONI
7	B-74-1000003	PIASTRA SUPERIORE	UPPER COVER
8	B-73-1000007	TAPPO	ORNAMENT STOP-UP
11	B-74-1000001	CAVO INTERRUTTORE-CAVO SECONDARIO 115V	SWITCH CABLE- SECONDARY CABLE 115V
12	B-61-1000014	CLIP	CLIP NUT
13	B-47-1000002	PANNELLO	SIDE PANEL
14	B-79-1300002	CAVO LASER	LASER LIGHT CONNECTION
15	B-79-1300001	CAVO LASER	LASER LIGHT CONNECTION
16	B-47-1000004	COPERCHIO PORTAPESI	LEAD BLOCK COVER
17	TB-S-0300001	SCATOLA ACCESSORI	ACCESSORY BOX
18	TB-S-0300003G	CALIBRATORE	CALIPER ASSEMBLY
19	TB-S-0500002	CHIAVE M12	SPANNER 12mm
20	TB-S-0400001	PESO 300gr.	WEIGHT 300gr.
21	TB-S-0100005	PINZA	BALANCE HAMMAR
22	TB-S-0300002	TOP	ACCESSOY TOP
23	TB-S-0500005	PESO 50gr.	WEIGHT 50gr.
24	B-74-1400011	BOOSTER 115V	BOOSTER 115V
25	B-78-1000011	CAVO ALIMENTAZ. PRINCIPALE 115V	MAIN POWER CABLE 115V
26	B-74-1000008	CAVO ALIMENTAZ. PRINCIPALE 115V	MAIN POWER CABLE 115V
27	B-74-1000009	TRASFORMATORE 115V-220V	TRANSFORMER 115V-220V
28	B-74-1000007	CAVO SECONDARIO 115V	SECONDARY CABLE 115V

GRUPPO RILEVATORE INTERNO

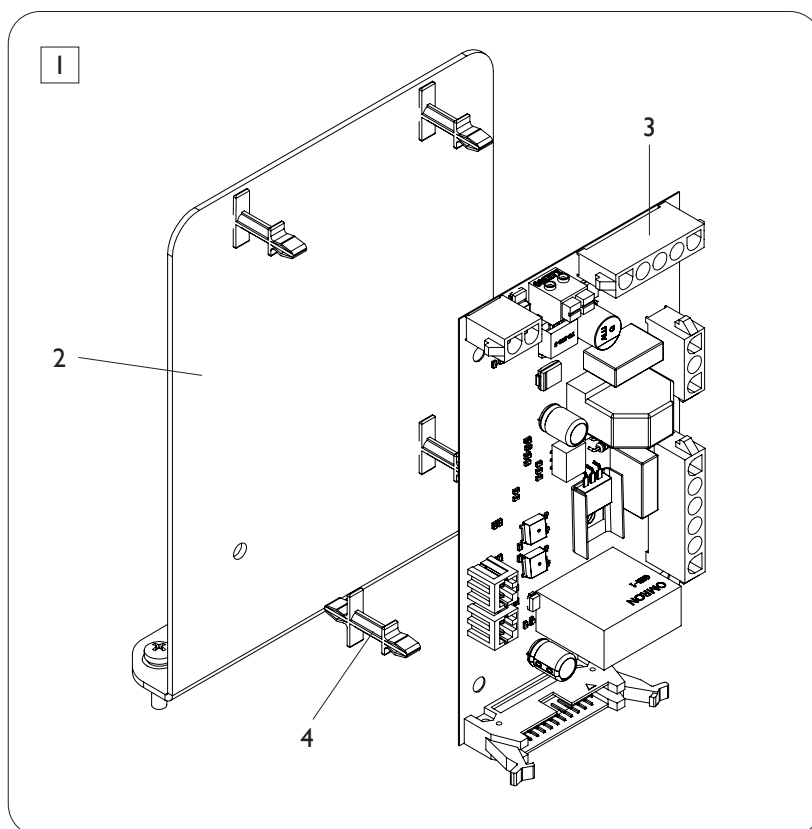
INTERNAL DETECTOR GROUP



[TORNA AL COMPLESSIVO](#)
[RETURNS TO OVERALL](#)

Rif. Ref.	Codice Code	Descrizione	Description
1	TB-L-0900000	GRUPPO RILEVATORE	AUTOMATIC MEASUREMENT SCALE ASSEMBLY
2	B-73-1300001	BANDA MAGNETICA	MAGNETIC GRID
3	B-73-1300002	SENSORE "A"	"A" VALUE SENSOR
4	B-73-1300004	SUPPORTO SENSORE	"A" VALUE SENSOR FIX BRACKET
5	B-73-1300005	PROLUNGA	FILLING BOARD
6	B-73-1300006	MOLLA	SPRING
7	B-73-1300007	SCHEDA	ACCELEROMETER
8	B-73-1300008	MOLLA	DISTANCE GAUGE SPRING
9	B-73-1300013	ASTA	DISTANCE GAUGE ROD
10	B-73-1300010	TARGHETTA MILLIMETRATA	SCALE
11	B-73-1300011	MAGNETE PICCOLO	SMALL MAGNET
12	B-73-1300012	RONDELLA	SEPARATION BLADE
13	B-73-1310000	LEVA CON TERMINALE	DISTANCE GAUGE HANDLE ASSEMBLY
14	GB894.1-20	SEEGER	SHAFT ELASTIC BIG RETAINING RING A-TYPE
15	GB70.1-M6X16	VTCEI M6X16	INNER HEXA CYLINDRICAL SCREW
16	B-71-1401000	SUPPORTO RILEVATORE	BRACKET ASSEMBLY
17	GB9074.4-M3X8	VATCIC M3X8	COMBINATION SCREW
18	B-73-1000008	CAVO SENSORE "A"	"A" VALUE SENSOR WIRE
19	B-73-1000003	CAVO SENSORE "D"	"D" VALUE SENSOR WIRE

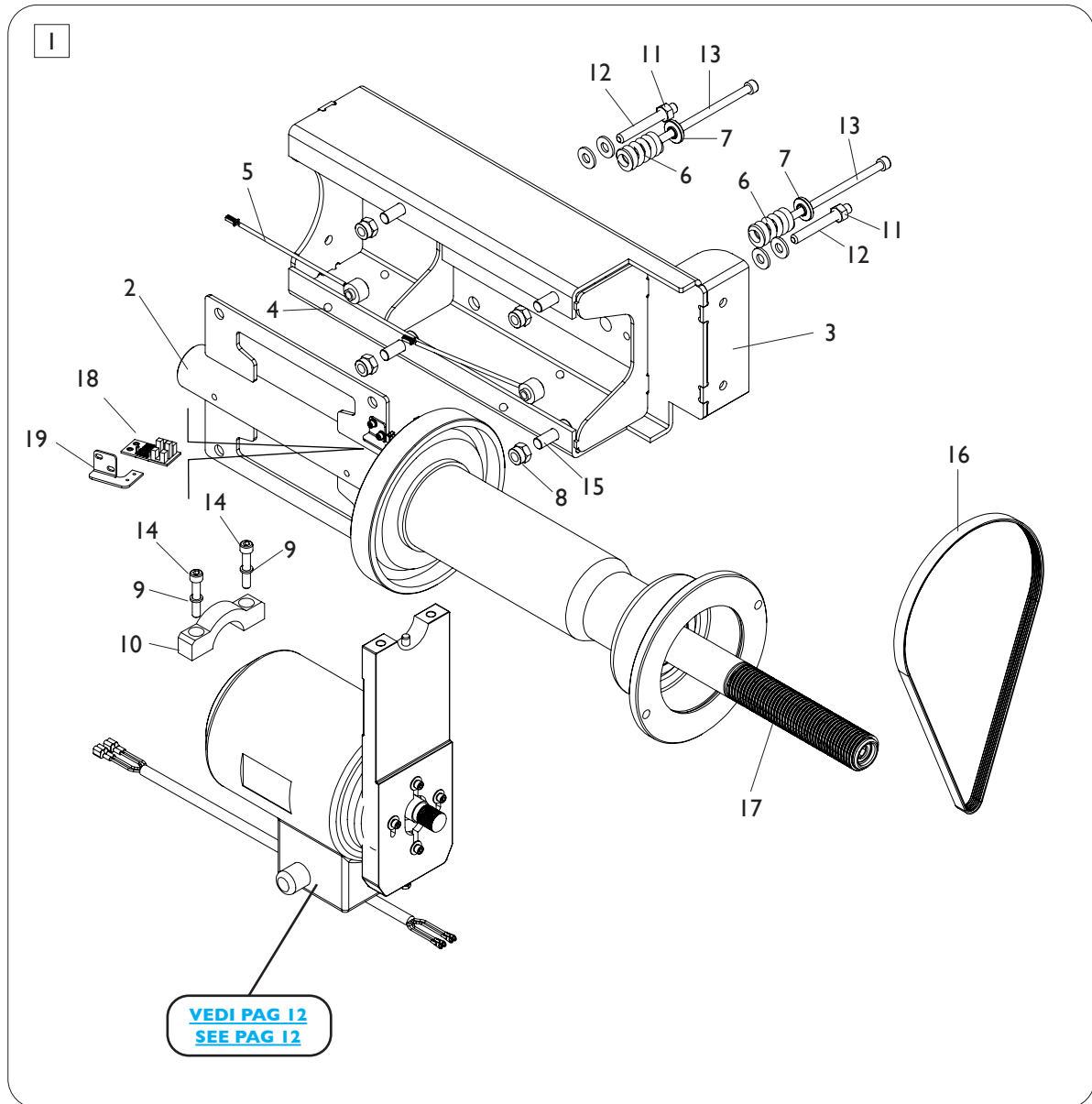
GRUPPO PANNELLO ALIMENTAZIONE POWER PANEL GROUP



[TORNA AL COMPLESSIVO](#)
[RETURNS TO OVERALL](#)

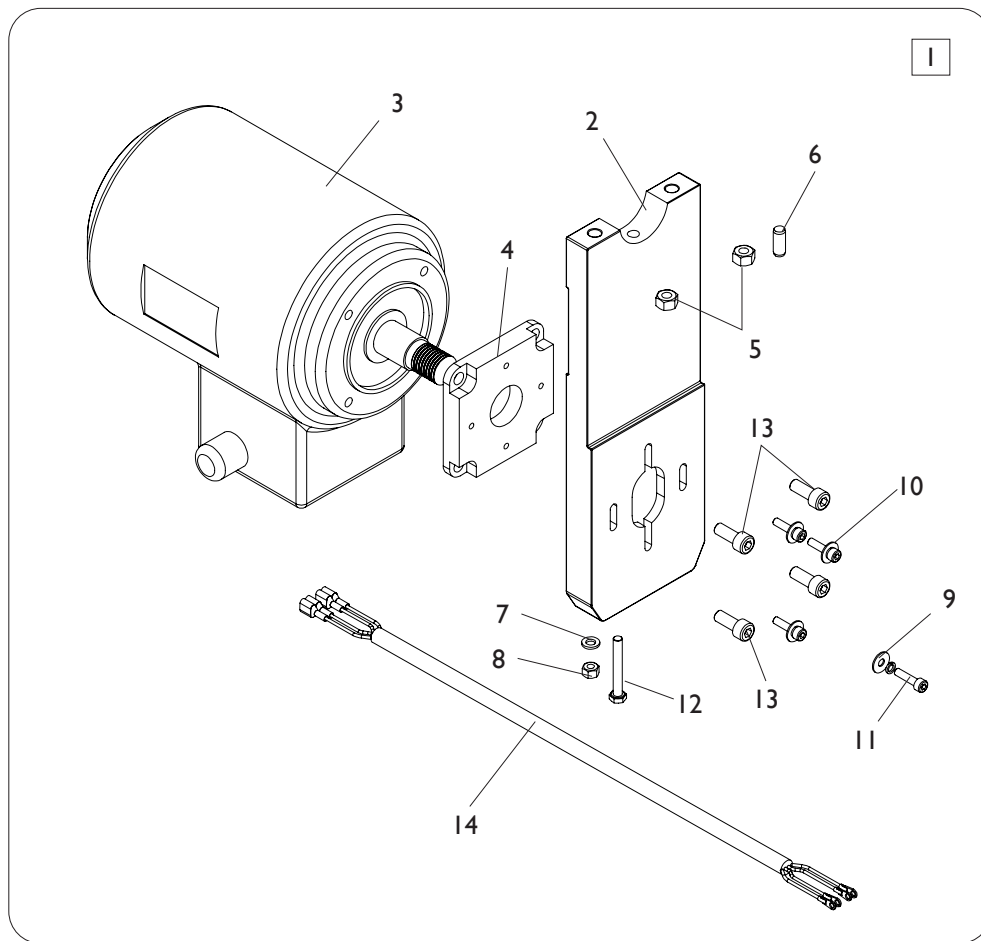
Rif. Ref.	Codice Code	Descrizione	Description
1	B-73-1400300	PANNELLO ALIMENTAZIONE CPL.	POWER PANEL ASSEMBLY
2	B-73-1400202	PIASTRA	BASE PLATE
3	B-76-1400005	SK ALIMENTAZIONE	POWER BOARD
4	TB-E-1211002	CLIP	PLASTIC CLIPPER

GRUPPO OSCILLANTE OSCILLATING GROUP



Rif. Ref.	Codice Code	Descrizione	Description
1	B-74-1200000	GRUPPO OSCILLANTE CPL.	BLANCE SHAFT ASSEMBLY
2	B-74-1210000	GRUPPO OSCILLANTE	BALANCING SHAFT ASSEMBLY PART
3	B-74-1230000	SUPPORTO GRUPPO	SUPPORTING STRUCTURE
4	B-73-1200009	SFERA	STAINLESS BEAD
5	B-73-1200003	PICK-UP	SENSOR ASSEMBLY
6	B-73-1200007	MOLLA	PRESS SPRING
7	B-73-1200006	BOCCOLA PER MOLLA	PRESS WASHER
8	GB889.1-M12	DADO ES.A. M12	I-TYPE PREVALLING TORQUE HEX. LOCK NUT
9	GB93-8	RONDELLA D.8	STANDARD SPRING WASHER
10	B-74-1250002	PIASTRA	PLATEN
11	GB6170-M10	DADO ES. M10	HEXANGULAR NUT I-TYPE
12	GB80-M10X80	VSTEI M10X80	INNER HEXA RECESSED TERMINUS SET SCREW
13	GB70.1-M8X140	VTCEI M8X140	INNER HEXA CYLINDRICAL SCREW
14	GB70.1-M8X45	VTCEI M8X45	INNER HEXA CYLINDRICAL SCREW
15	GB70.1-M12X30	VTCEI M12X30	INNER HEXA CYLINDRICAL SCREW
16	B-74-1200001	CINGHIA	BELT
17	B-73-1215000	MOZZO	BALANCER SPINDLE
18	B-73-1210001	SCHEDA ENCODER	ENCODER BOARD
19	B-74-1210001	SUPPORTO SCHEDA	SUPPORT

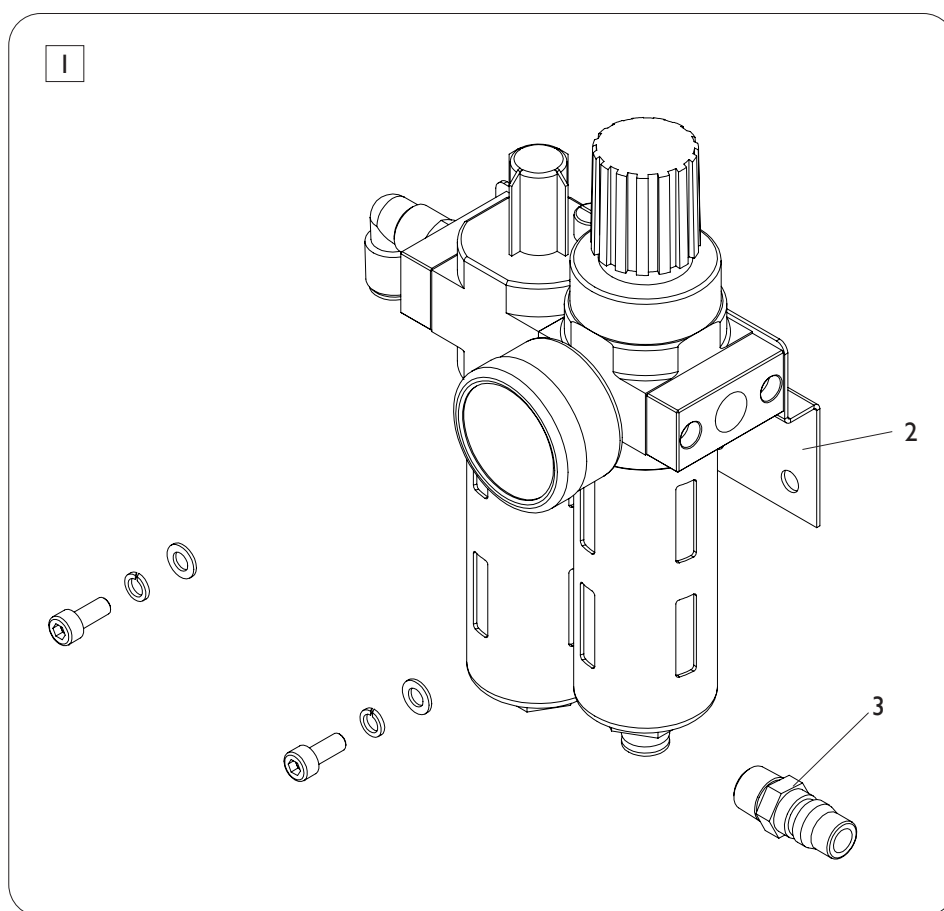
GRUPPO MOTORE MOTOR GROUP



[TORNA AL COMPLESSIVO](#)
[RETURNS TO OVERALL](#)

Rif. Ref.	Codice Code	Descrizione	Description
1	B-74-1220000	MOTORE COMPLETO	MOTOR DEPARTMENT INSTALLED
2	B-74-1221003	SUPPORTO MOTORE	MOTOR SUPPORT BRACKET
3	B-74-1221100	MOTORE	MOTOR
4	B-74-1221001	PIASTRA	ADJUSTMENT PLATE
5	GB41-M8	DADO ES. M8	HEXANGULAR NUT M8
6	GB119.2-8X20	PERNO	CYLINDRICAL PIN
7	GB95-6	RONDELLA	FLAT WASHER
8	GB41-M6	DADO ES. M6	HEXANGULAR NUT M6
9	GB96.2-5	RONDELLA	LARGE WASHER "C" GRADE
10	GB93-5	RONDELLA	STANDARD SPRING WASHER
11	GB70.1-M5X20	VTCEI M5X20	INNER HEXA CYLINDRICAL SCREW
12	GB5781-M6X45	VTE M6X45	HEXANGULAR BOLT
13	GB70.1-M8X20	VTCEI M8X20	INNER HEXA CYLINDRICAL SCREW
14	B-74-1221004	CAVO MOTORE	MOTOR LINE

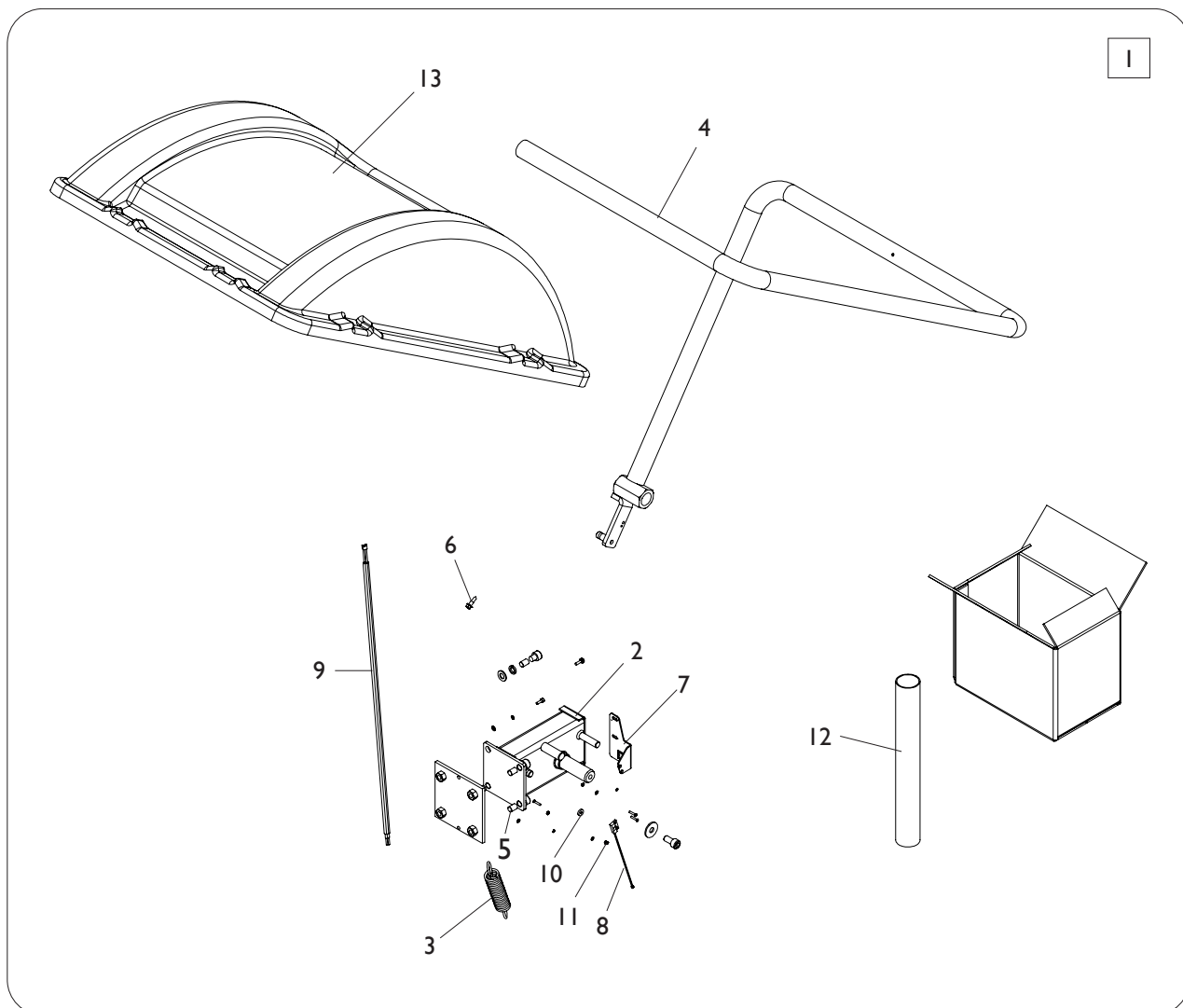
GRUPPO FILTRO FILTER GROUP



[TORNA AL COMPLESSIVO](#)
[RETURNS TO OVERALL](#)

Rif. Ref.	Codice Code	Descrizione	Description
1	B-74-1500000	FILTRO COMPLETO	MAINFOLD ASSEMBLY
2	CT-F-2151200	SUPPORTO FILTRO	WYE
3	C-54-8000011	RACCORDO INNESTO ARIA	AIR SUPPLY CONNECTOR

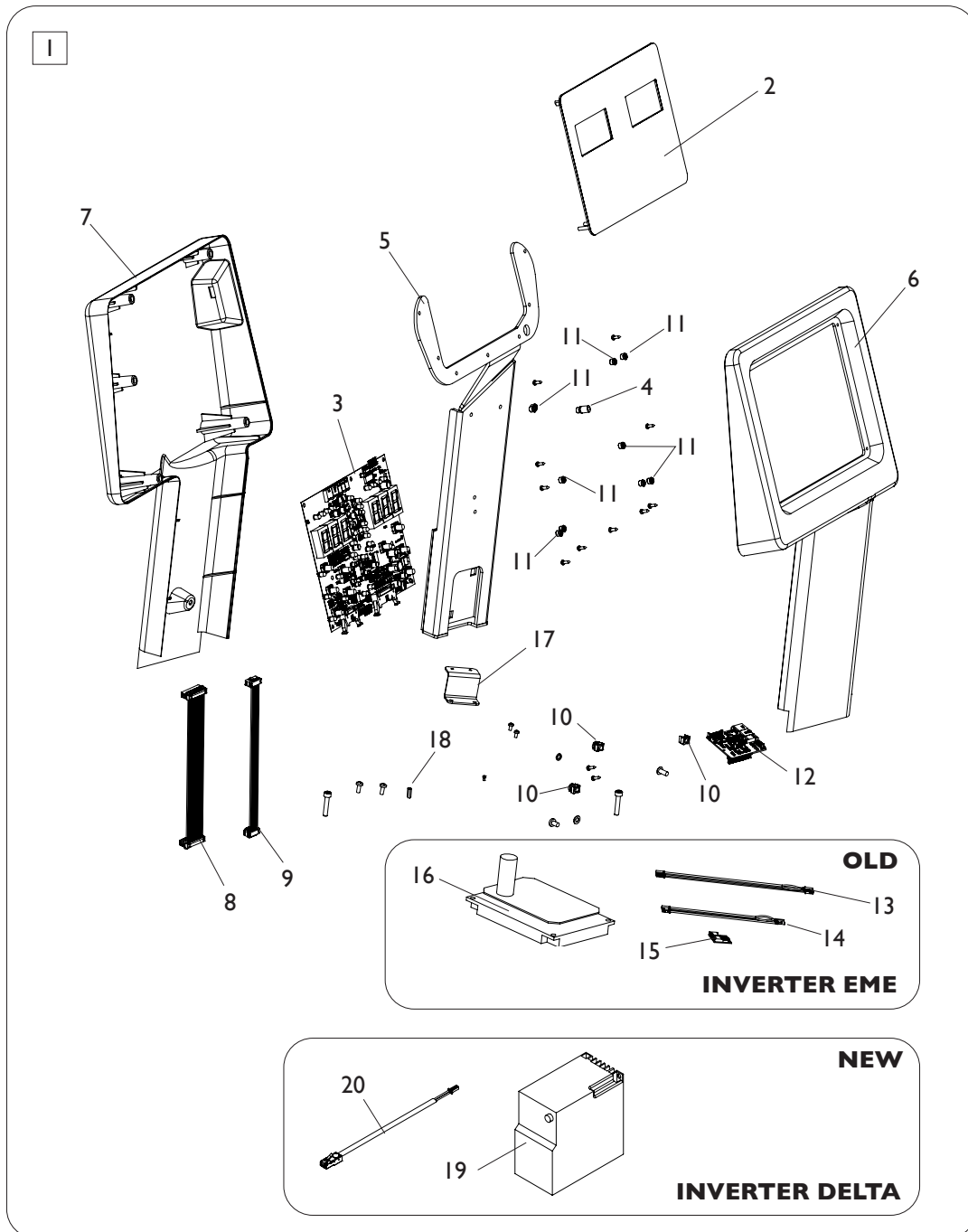
GRUPPO PROTEZIONE RUOTA WHEEL PROTECTION GROUP



[TORNA AL COMPLESSIVO](#)
[RETURNS TO OVERALL](#)

Rif. Ref.	Codice Code	Descrizione	Description
1	TB-F-010000A	PROTEZIONE RUOTA CPL.	PROTECTIVE COVER ASSEMBLY
2	TB-F-0110000	PIASTRA SUPPORTO PROTEZIONE	PROTECTIVE HOOD SUPPORT
3	TB-F-0100001	MOLLA	SUPPORT PIPE EXTENTION SPRING
4	TB-F-0720000	SUPPORTO PROTEZIONE	PROTECTIVE HOOD SUPPORT
5	GB70.1-M10X35	VTCEI M10X35	INNER HEXA CYLINDRICAL SCREW
6	GB15856.4-ST5.5X19	VTE FLANGIATA	HEXA FLANGE TAPPING SCREW
7	TB-F-0100007	PIASTRA DI PROTEZIONE	PROTECTIVE PLATE
8	B-53-1000010	MICRO	MAGNETIC SWITCH
9	TB-F-0100018	CAVO MICRO	POWER LINE
10	TB-F-0100016	MAGNETE	MAGNET
11	GB889.1-M3	DOADO ES.A. M3	I-TYPE PREVAILING TORQUE HEX. LOCK NUT
12	TB-F-0100014	PROTEZIONE	PROTECTIVE CASING
13	TB-F-0700001	PROTEZIONE RUOTA	PROTECTING MASK

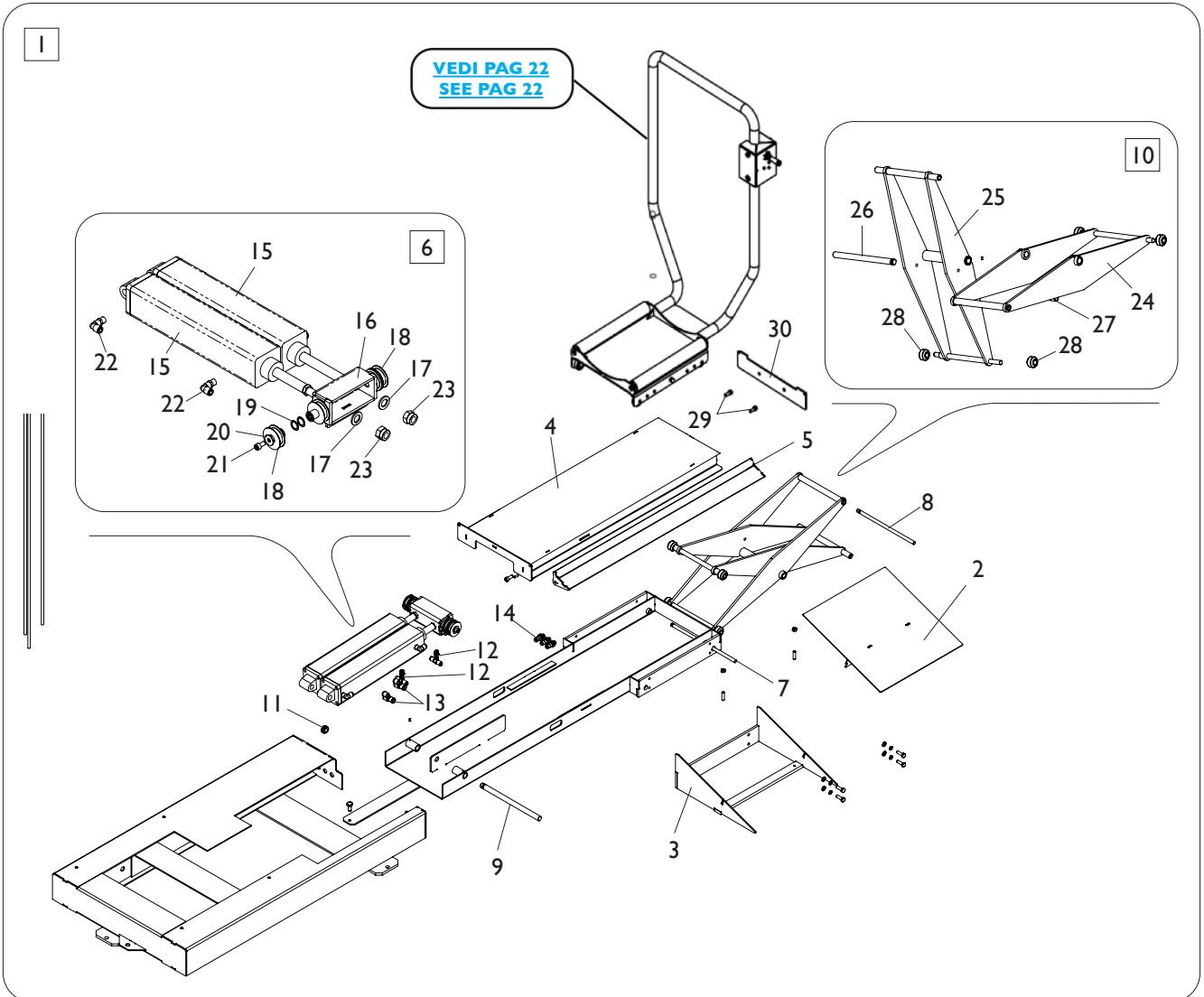
GRUPPO DISPLAY DISPLAY GROUP



[TORNA AL COMPLESSIVO](#)
[RETURNS TO OVERALL](#)

Rif. Ref.	Codice Code	Descrizione	Description
1	B-47-140000	DISPLAY COMPLETO	DISPLAY UNIT
2	B-47-142000	DISPLAY	DISPLAY PANEL
3	B-74-1400001	SK CPU + FW INVERTER DELTA	MAIN BOARD WITH FW INVERTER DELTA
3	B-74-1400001L	SK CPU + FW INVERTER EME	MAIN BOARD WITH FW INVERTER EME
4	B-73-1400003	DISTANZIALE	BASE ROD
5	B-73-1410000	SUPPORTO DISPLAY	DISPLAY COVER BRACKET WELD
6	B-47-1400001	COVER ANTERIORE	DISPLAY FRONT COVER
7	B-47-1400002	COVER POSTERIORE	DISPLAY REAL COVER
8	B-73-1400004	CAVO ALIMENTAZIONE	POWER BOARD CABLE
9	B-73-1400005	COVO ENCODER	ENCODER BOARD CONNECTION WIRE
10	B-73-1000004	DADO IN GABBIA	CLIP NUT
11	GB889.1-M4	DADO ES.A. M4	I-TYPE PREVAILING TORQUE HEX. LOCK NUT
12	B-74-1400002	SK ESPANSIONE	EXPANSION BOARD
13	B-74-1400003	CAVO ADINV-INVERTER L=170	CABLE ADINV-INVERTER L=170
14	B-74-1400004	CAVO 2X AMPMODU2 L=1200	CABLE 2X AMPMODU2 L=1200
15	B-74-1400005	SCHEMA MULTIFUNZIONE BTIX	BOARD FOR TOUCHSCREEN, INVERTER, EXPANSION
16	B-74-1400006	INVERTER EME	INVERTER EME
17	B-74-1400007	PIASTRA	SUPPORT
18	B-74-1400009	DISTANZIALE	CUSHION COLUMN
19	B-74-1000004	INVERTER DELTA	INVERTER DELTA
20	B-74-1000005	CAVO INVERTER DELTA	CABLE FOR INVERTER DELTA

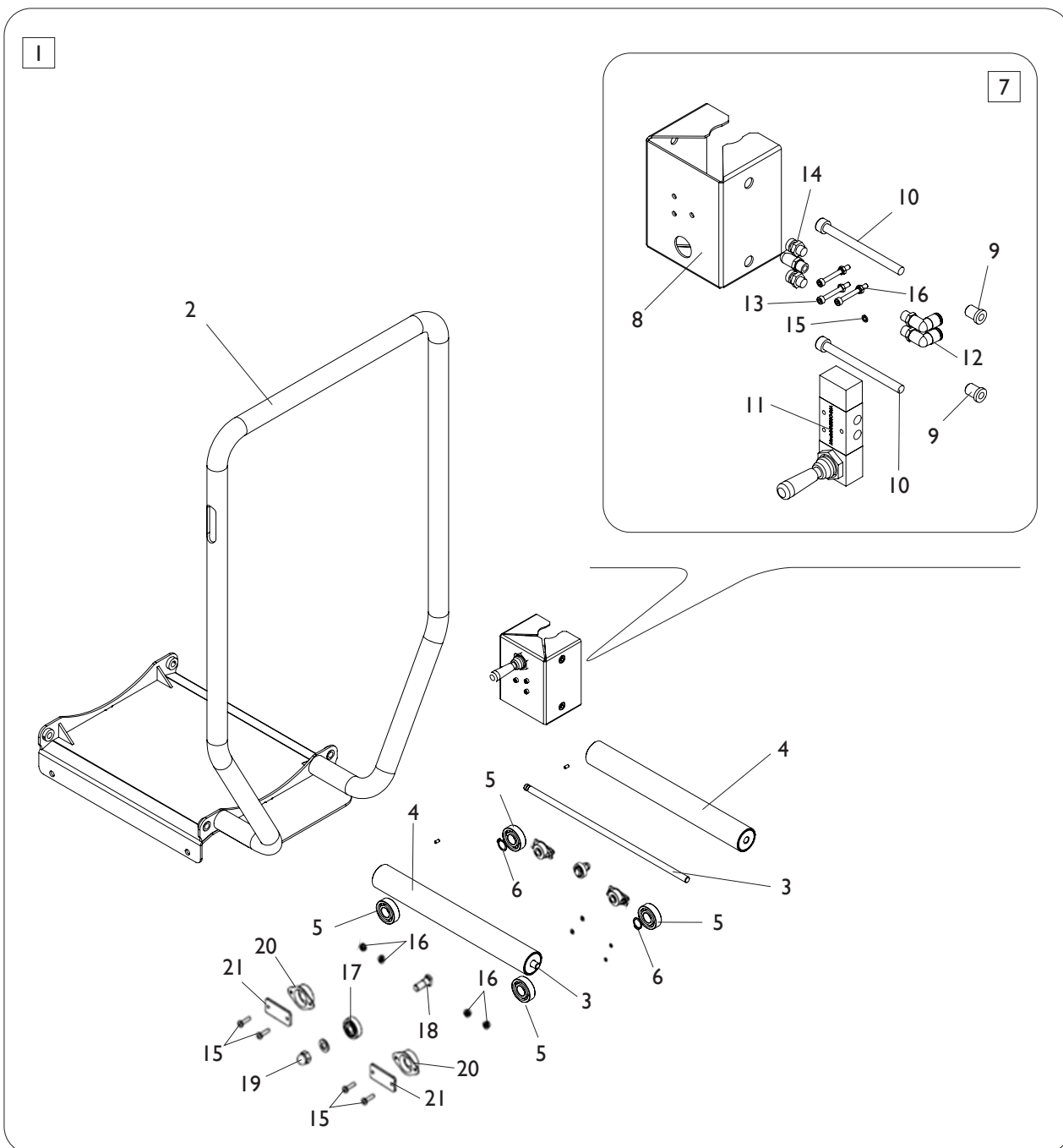
GRUPPO SOLLEVATORE LIFTER GROUP



**TORNA AL COMPLESSIVO
RETURNS TO OVERALL**

Rif. Ref.	Codice Code	Descrizione	Description
1	TB-J-0800000	SOLLEVATORE COMPLETO	LIFETR ASSEMBLY
2	TB-J-0403200	RAMPA	BOARD WELD
3	TB-J-0403100	TELAIO RAMPA	SLOPE WELD
4	TB-J-0805000	PEDANA	PLATE WELD
5	TB-J-0406000	PIASTRA ROTANTE	ROTATING PLATE
6	TB-J-0409000	GRUPPO CILINDRI	CYLINDER ASSEMBLY
7	TB-J-0400001	PERNO	SUPPORT SHEFT
8	TB-J-0400002	PERNO	SUPPORT SHEFT
9	TB-J-0400003	PERNO	SUPPORT SHEFT
10	TB-J-0407000	GRUPPO FORBICI	SCALABLE ASSEMBLY
11	C-71-1000019	GOMMINO	RUBBER GROMMET
12	FPA-8	VALVOLA REGOLAZIONE VELOCITA	SPEED ADJUST VALVE
13	FPY-8	RACCPN-Y D.8	Y-SHAPE INSERT FITTING D.8
14	TB-J-0800002	INNESTO	CONNECTOR
15	TB-J-0409200	CILINDRO	CYLINDER
16	TB-J-0409100	PIASTRA	PUSH PULL SEAT
17	GB95-16	RONDELLA D.16	FLAT WASHER D.16
18	TB-J-0409001	RUOTA	WHEEL
19	TB-J-0409002	SPESSORE	MAT
20	GB96.1-8	RONDELLA	LARGE WASHER A GRADE
21	GB70.1-M8X16	VTCEI M8X16	INNER HEXA CYLINDRICAL SCREW
22	FPL 8-03	RACCPN-L- 3/8 D.8	INSERT ELBOW R3/8 D.8
23	GB889.1-M16X1,5	DADO ES.A. M16X1,5	I-TYPE PREVAILING TORQUE HEX. LOCK NUT
24	TB-J-0407200	FORBICE ESTERNA	SUPPORT ASSEMBLY
25	TB-J-0407100	FORBICE INTERNA	SUPPORT ASSEMBLY
26	TB-J-0407001	PERNO	SUPPORT SHAFT
27	TB-J-0407002	PROTEZIONE	COVER
28	TB-J-0407003	RUOTA	WHEEL
29	GB70.1-M8X20	VTCEI M8X20	INNER HEXA CYLINDRICAL SCREW
30	TB-J-0800004	PIASTRA POSTERIORE	REAR BEZEL

GRUPPO CARRELLO SOLLEVATORE CARRIAGE LIFTER GROUP



[TORNA AL COMPLESSIVO](#)
[RETURNS TO OVERALL](#)

Rif. Ref.	Codice Code	Descrizione	Description
1	TB-J-0803000	GRUPPO CARRELLO	SLIDE ASSEMBLY
2	TB-J-0803100	CARRELLO	BLOCK
3	TB-J-0408001	PERNO	POLE
4	TB-J-0408200	RUOTA	WHEEL ASSEMBLY
5	GB276-6203	CUSCINETTO	DEEP GROOVE BALL BEARINGS
6	GB894.1-16	SEEGER	SHAFT ELASTIC BIG RETAINING RING "A-TYPE"
7	TB-J-0803200	COMANDO CPL. SOLLEVATORE	HAND CONTROL BOX ASSEMBLY
8	TB-J-0803201	SCATOLA COMANDI	HAND CONTRLO BOX
9	TB-J-0803202	PERNO FILETTATO	THREADED POST
10	GB70.1-M8X100	VTCEI M8X10	SCREW
11	4H230-06A	VALVOLA	CONTROL VALVE
12	FPL 6-01	RACCORDO	MALE ELBOW
13	GB70.1-M4X35	VTCEI M4X35	INNER HEXA CYLINDRICAL SCREW
14	RSW 1-8	SILENZIATORE	SILENCER SPEED ADJUSTER
15	GB93-4	RONDELLA D.4	WASHER D.4
16	GB6170-M4	DADO ES. M4	HEXANGULAR NUT I-TYPE
17	GB276-629	CUSCINETTO	DEEP GROOVE BALL BEARINGS
18	TB-J-0803008	PERNO	ROTATING
19	GB923-M8	DADO CIECO M8	CAP NUT
20	TB-J-0803009	CUSCINETTO REGGISPINTA	BULL EYE BEARING
21	GB95-4	PIASTRA DISTANZIALE	SPACER

Code 4-I36622

Production date : 07 / 2022

Il disegno è realizzato con tutti i particolari ma solo quelli codificati sono forniti come ricambi. L'Azienda si riserva la facoltà di apportare modifiche senza preavviso.

The drawing shows all parts but only the coded parts are supplied as spares. The Company reserves the right to make modifications without prior notice.